

North Notts
College

FUTURES FOR *Everyone*

**COURSES AND
APPRENTICESHIPS**

2023/2024

THIS IS *Your Time*

PRINCIPALS WELCOME

**DURING YOUR
TIME WITH US WE
WANT TO HELP
YOU ACHIEVE YOUR
ASPIRATIONS.**



Jason Austin
CEO and Principal of RNN Group*

*RNN Group comprises of Rotherham College,
North Notts College and Dearne Valley College

Time is something we all have, but what it means to us and how we use it differs so much. It can mean time for ourselves, to grow, reflect, and develop skills. It can mean time for others, for socialising, making lifelong friendships, or caring for family. No matter what your goals are, it takes time to achieve them.

We challenge you to achieve everything you want to do and will support you on your journey of life-changing learning. With us, you can spend your time wisely, putting your passion to practice in our first-rate facilities, all whilst being taught by our industry-experienced tutors. You'll be able to learn in environments that simulate the real world, on courses that have been designed in close collaboration with our wide network of local and regional employers.

Of course, College isn't just about 'studying'. During your time with us, you will benefit from access to enrichment programs, clubs, social action projects, and memory-making overseas trips. You can also make your voice heard by taking part in our Student Union.

How you use your time is one of the most important things you'll ever decide. We are so excited that you are considering spending it with us to take your next step on your learning journey.



STUDENTS WELCOME

COLLEGE IS A PLACE WHERE YOU CAN PURSUE YOUR PASSIONS AND BUILD A BRIGHT, HANDS-ON FUTURE.

At my local sixth form I decided that the courses weren't for me. They were teaching about topics that didn't interest me and in a way that doesn't suit my style of learning. Then I saw courses for Media Make-up in the college course guide and I thought 'now that excites me!'.

When studying for your GCSEs, you can feel like you're applying for courses that follow other people's expectations of you. But this is a time when you should continue discovering what makes you tick, and your path should be passion-led. Most importantly, it should be a choice that you make.

GET IN TOUCH

North Notts College
01909 504500
contact@nnc.ac.uk

When I started studying at College, it completely validated my decision to go hands-on instead of sixth form. It's a learning atmosphere unlike anything I've experienced; from the tutors to your classmates, everyone is so supportive and wants to be there for you. You're treated like an adult, which helps you mature and grow your self-confidence.

Your time at College really does set you up for a fantastic future. I've got a place at the University of Arts London, with the London College of Fashion. I'll be working on London Fashion Week, and continuing to build my skills and networks there which I'm now confident with from my time studying at College.

I've grown so much as a person – whether it's my technical skills or how I feel about myself and interact with the world.

I encourage you to find out more, and maybe even attend an Open Event; I did, and one of the helpful students I spoke to there is now a close friend!

College for me is one of the best decisions I ever made, and I hope it will be for you too.

Darcey Armstrong

Level 3 Media Make-up

NORTH NOTTS *We are your College*

HANDS-ON LEARNING IN THE HEART OF WORKSOP AND RETFORD.

At North Notts College, what you learn is what you'll use. Every year, our technical courses and apprenticeships help to educate, develop and prepare thousands of local people to achieve their dreams.

YOUR CHOICE

Our courses and apprenticeships are designed together with local employers to make sure that whatever your dream career is, we'll make sure you're prepared. Choose from a wide range of subjects including:

- Business
- Computing
- Construction
- Education and Childcare Services
- Engineering
- English and maths
- FLEX - Dedicated department for students with Special Educational Needs
- Hair and Beauty
- Health and Social Care
- Media Make-up
- Motor Vehicle
- Public Services
- Sport



For more information about North Notts College, please visit: nnc.ac.uk

YOUR FACILITIES

Across our three campuses in the heart of Worksop and Retford, we take learning beyond the classroom. Our main campus in Worksop is just a five minute walk from the train station and offers engaging learning environments such as our Hair and Beauty salon (open to members of the public), our purpose-built construction workshops, kitted out with all the tools you need to succeed and our state-of-the-art gym.

The Retford Education Centre, our second campus, provides our students with the perfect space to develop. Here, we provide courses in Media Make-up and Sport, where our students have access to cutting-edge equipment and spacious facilities.

Located in Worksop town centre is our Bridge Skills Hub campus, where we deliver Higher-Level qualifications alongside our sister university, University Centre Rotherham. To find out more about higher-level qualifications in the heart of Bassetlaw, please visit nnc.ac.uk/bridge-skills-hub/

UNSURE ABOUT YOUR NEXT STEP?

Check out page 12 to read up on the different benefits with Technical courses, Apprenticeships and T Levels



YOUR College Experience

STUDYING AT COLLEGE CAN BE AN EXPERIENCE LIKE NO OTHER.

We provide plenty of opportunities to try new things, and most importantly have fun. At College you'll have more freedom, learn new skills and build friendships to last a lifetime.

ENRICHMENT

Make the most of your free time and meet friends for life with our fun extracurricular activities, including cross college sports days, World Skills UK competitions, charity events, fun runs, book clubs and much more!



BECOME A STUDENT AMBASSADOR

As a college student, you'll have a lot more free-time on your hands. Now's the perfect time to enhance your CV and lend a hand as a student ambassador. As an ambassador, you get paid to help out at College Open Events, give tours and go out to local schools to speak to potential students. Becoming a student ambassador will not go unnoticed by future employers.

ENJOY HEARING FROM GUEST SPEAKERS

As well as being taught by top-class tutors, throughout the academic year you'll have the chance to hear from industry guest speakers. You will meet professionals who work for some of the top organisations in their field and help provide you with a unique insight into your future profession.

INDUSTRY PLACEMENTS

We work closely with businesses across the region to not only develop our curriculum and facilities, but also to help you get your foot in the door. Through our industry placements you can start climbing the career ladder and gain invaluable experience - perfect for building your CV.



ERASMUS/TURING SCHEME

Have you ever dreamt of living abroad? Now's your chance! We work together with Erasmus+ and the Turing scheme to offer our Level 3 and degree students the once in a lifetime opportunity to travel and work abroad. Previous students have worked in places such as Italy, Malta, Germany, Portugal and Spain.

TRIPS AND EXCURSIONS

Off-campus learning is key to life at college. Whilst studying, you and your classmates will have the opportunity to go on exciting trips and excursions to businesses, attractions, universities and more. Former students have visited places such as St. George's Park, home to England's football team. They have also visited state-of-the-art construction sites, the Etihad Stadium and many, many more.



Course Levels

EXPLAINED

Our courses are offered in a variety of different levels, we refer to them as Introduction Skills (Entry Level 1 – Entry Level 3), Level 1, Level 2 and Level 3 courses.

The table below explains our typical entry requirements, the course duration and what each level means to help you find a starting point.

YOUR EXAM RESULTS OR PREDICTED GRADES	YOUR STARTING POINT AT COLLEGE	TYPICAL DURATION	WHAT THIS LEVEL MEANS
5 GCSEs at grade 4 or above OR A relevant Level 2 qualification	T Levels	Two years	T Levels are a Level 3 course which offer students a mixture of classroom learning and an industry placement of 315 hours (45 days). Equivalent to three full A-Levels.
	Level 3 course	A one or two-year course	Our Level 3 courses allow you to start to gain greater knowledge and learn advanced skills in your chosen industry. A two-year Level 3 course is the equivalent of three full A-Levels.
	Level 3 Apprenticeship	Typically lasts 18 months to two years	
4 GCSEs at grade 3 or above OR A relevant Level 1 qualification	Level 2 course	A one-year course	Our Level 2 courses allow you to specialise in your chosen industry.
	Level 2 Apprenticeship	Typically lasts one year	This provides a great foundation to build skills, knowledge and behaviours required for your chosen industry.
GCSEs at grade 2 or below	Level 1 courses	A one-year course	Our Level 1 courses give you the chance to explore a range of areas within your chosen industry, helping you to progress to Level 2.
No GCSEs or pre-GCSEs	Introduction Skills (Entry Level 1 – Entry Level 3 courses)	One-year per level	Our Entry Level courses introduce you to a subject area and are taught alongside other employability skills.

GRADING

Qualifications are now graded 9-1 rather than A*-G, with a grade 9 being the highest and grade 4 being an acceptable pass.

CURRENT GRADING STRUCTURE	FORMER GRADING STRUCTURE
9	A*
8	
7	
6	B
5	
4	
3	D
2	
1	
U	U

If you would like advice on what level is most suitable for you, please contact us on schoolevents@rnngroup.ac.uk

ENTRY REQUIREMENTS

If you haven't achieved GCSE maths and English at grades 4 or above you will undertake these qualifications alongside your main programme. In addition to qualifications, you should also have genuine interest in the area you wish to study.

The table on page 8 shows our typical entry requirements. Some courses have additional entry requirements, which are listed throughout this guide. You can also find more information on our college websites.

PROGRESSION

After completing a Level 3 qualification you could progress into employment, further training or Higher Education.

We have Higher Education courses ranging from Level 4 to Level 7 available at our college campuses and our dedicated Higher Education campus, University Centre Rotherham (UCR). This includes Foundation Degrees, HNCs, HNDs, BA/BSc Honours and more. For more information see pages 18-19.

How to Apply

Use our checklist to complete your application and start your College.

1. RESEARCH

- ☐ Identify subjects you find interesting in our course guide
- ☐ Visit our websites for useful information and to explore your career options
- ☐ Come along to an Open Event to meet our Tutors and get a feel for our college campus (See pages 26-27)

If you would like a more personalised visit, please email us at:

schoolevents@rnngroup.ac.uk

2. APPLY

- ☐ The quickest way to apply is online via our website:

nnc.ac.uk/apply-now

Once we receive your application you will get a confirmation email. Within five days you will receive login details to the online Admissions Manager where you can track the progress of your application.

Please include your personal email address and mobile number and update us of any changes so that we can keep in touch with you.



3. ATTEND

☐ You will be invited to attend an interview to ensure that the course is right for you

☐ If you have stated you have any learning needs we will also invite you in for an Additional Learning Support assessment

Note: Some courses may require you to bring a portfolio of work as part of the interview process.

4. ENROL

☐ When you have received your exam results in August you will be sent an email to enrol online

☐ You will also be invited in to complete your enrolment process by bringing in your GCSE certificates. You will receive your college badge, start date and timetable ready for September

CONTACT US

We are here to support you:

Our Learner Recruitment Team can provide more course information, assistance when completing your application and support you with unexpected exam results.

To change any details on your application (including your course) you don't need to complete another form, simply contact us or visit our campus.

..... • North Notts College •

Worksop Campus

Carlton Road
Worksop
Nottinghamshire
S81 7HP

Retford Campus

Old Hall Drive
Retford
Nottinghamshire
DN22 7EA

.....
01909 504500

contact@nnc.ac.uk
.....

Your Study Options

WHETHER YOU'RE LEAVING SCHOOL OR RETURNING TO EDUCATION, COLLEGE IS AN EXCITING TIME FILLED WITH NEW EXPERIENCES WHICH GIVES YOU THE FREEDOM TO CHOOSE YOUR NEXT STEP.

At North Notts College we have a number of options for your post-16 choice including technical courses, T Levels and apprenticeships. One thing all these options have in common is that you'll acquire hands-on experience in a subject that interests you, allowing you to develop the industry skills and knowledge needed to begin a successful career.

Throughout this course guide your options will be explained to help you make an informed decision. If a number of options spark an interest, you can apply to more than one course and don't have to decide until your GCSE results are finalised in August.

If you would like to discuss your options further get in touch with us on schoolevents@nncgroup.ac.uk

TECHNICAL COURSES

Technical courses are specialist courses focusing on one subject area. These courses come in a range of different course areas and provide you with all the practical skills and knowledge needed in your future career. On a technical course, you usually spend around three days-a-week studying your chosen course, with the rest of the time free to complete assignments, undertake work experience or pursue a hobby.

You may know technical courses as BTECs, NVQ and VRQs, with different courses available at a level to suit each student. More information can be found on page 14.

T LEVELS

T Levels are similar to technical courses, as they provide specialist training in a given area. The difference between the two is that T Levels include an in-depth industry placement that lasts at least 45 days. More information can be found on pages 14.

APPRENTICESHIPS

An apprenticeship is a paid job where you will receive practical training and work alongside experienced staff. You will be in a real working environment, gaining employability skills and knowledge of an industry-sector.

As an apprentice, you'll work towards a nationally recognised qualification and typically spend four days a week in the workplace and one day a week at College (Some apprenticeships are five days in the workplace, where you will be given 20% of your normal working hours on training).

Apprenticeships are competitive like any job so it's worth having a college course as a back up option. More information on apprenticeship can be found on pages 16-17.

“The facilities at College provide me with a great environment to gain the qualifications I need to pursue a career as an electrician.”

.....

Shane Anderson

Level 3 Apprenticeship in Electrical Installation



“The Business course at North Notts College is a perfect fit for me as it replicates the real working world with assignment and group based learning.”

.....

Harvi Moss

Level 3 Business

WHAT IS A Technical Course?

Technical courses are designed to help you to develop the skills and confidence to succeed in your chosen career. You will be taught by tutors with industry skills and experience and you'll learn in high-quality, purpose-built facilities that simulate a real working environment.

Technical courses at Level 3 are equivalent to A-Levels and are worth UCAS points, which means you can progress onto university after completion. They are mostly assessed by project work over the course of the year and can involve some exams and tests depending on the qualification.

Vocational courses have a number of different names such as BTECs, NVQs (National Vocational Qualifications) and VRQs (Vocationally Related Qualifications) that are available at different educational levels, so it is appropriate for students as they develop their skills and abilities.

Technical courses at Entry, Level 1 and Level 2 also help students develop their skills and move towards work or higher-level courses.

Our students have lots of contact with the 'real world' of employers and business through work experience, talks, visits or real-life projects. To celebrate International Women's Day, Media Make-up students worked with South Yorkshire Fire and Rescue Services on their Women of Fire campaign. The campaign celebrated the achievements of women in the Fire and Rescue Service through a series of photographs of female Fire Officers, styled by our Media Make-up students.

Students may also be involved in activities that develop skills of enterprise and entrepreneurship demonstrated by our student who participated in a book donation project. Over 90 books have been donated to the charity Grimm and Co who support under-resourced children with their confidence and skills around creativity and writing.

Students also take part in competitions such as the yearly inter-college championship where North Notts College compete against Grimsby Institute where over 30 subject areas showcased their specialist skills.

T-LEVELS

THE NEXT LEVEL QUALIFICATION

WHAT ARE T LEVELS?

We will be delivering T Levels from September 2023 which offer students a mixture of classroom learning and an industry placement of 315 hours (45 days) where you will be fully integrated into the workplace.

T Levels are two-year technical programmes, designed with employers, to give young people the practical skills and knowledge that industries need.

The 'T' stands for technical and they are an alternative to A-levels. One T Level is equivalent to 3 A-levels and will be assessed using a mixture of practical tasks, projects and exams.

We will be offering T Levels in Construction, Digital, Education and Childcare and Health and Science.

Please check our website for the latest information.



WHAT IS AN Apprenticeship?

AN APPRENTICESHIP IS A JOB, WHERE YOU RECEIVE TRAINING, LEARN, AND DEVELOP SKILLS WITHIN AN INDUSTRY SECTOR.

93%

OF APPRENTICES REMAIN EMPLOYED ON COMPLETION

2.2M

PEOPLE HAVE STARTED AN APPRENTICESHIP SINCE 2015

APPRENTICESHIPS IN PRACTICE

As an apprentice, you are a paid employee, who receives training and education in combination with gaining work experience, where you have a contract of employment and employer rights, such as paid annual leave.

Apprentices work towards a national recognised qualification and typically spend four days a week in the workplace and one day a week completing off-the-job training, this is typically (but not always) at College.

APPRENTICESHIP LEVELS

Apprenticeships offer a wide range of different levels to meet the fluctuating demands of each level of business. We provide apprenticeship options ranging from Level 2 to Level 6, all taught by our team of industry-experienced staff.

Type	Level	Equal Educational Level
Intermediate	2	5 GCSEs at grades 9-4
Advanced	3	2 A-Levels
Higher	4, 5	Foundation Degree
Degree	6	Bachelor's Degree

80%

OF AN APPRENTICES TIME IS SPENT AT THE WORKPLACE AND 20% DOING OFF-THE-JOB LEARNING



APPRENTICESHIP SALARIES AND BENEFITS

As an apprentice, you are entitled to earn a salary of at least the National Minimum Wage for apprentices, which is currently £4.81 (as of April 2022 - Updated annually on the 1st of April).

A lot of employers choose to pay their apprentices a higher salary than the National Minimum Wage.

As an apprentice, you are also entitled to paid holiday, sick pay, support in the form of mentoring or coaching and benefit schemes such as childcare.

£4.81

APPRENTICESHIP NATIONAL MINIMUM WAGE

OUR APPRENTICESHIPS

Our apprenticeships last anywhere from 12 months to four years and are available to anyone over the age of 16, with no upper age limit. To explore our apprenticeship courses, please see our course list (page 29).

We offer apprenticeships in the below areas:

- Business Administration
- Construction
- Early Years and Education
- Engineering
- Hairdressing
- Health and Social Care
- Hospitality
- Management
- Motor Vehicle

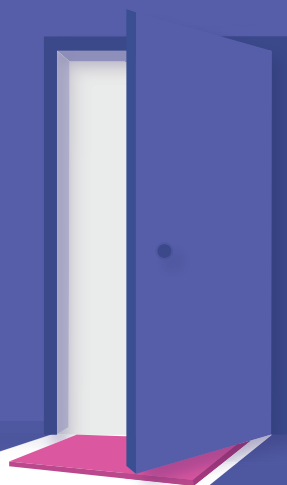
Degrees on your Doorstep

**University Centre Rotherham
is just a short journey away!**

Find out more:

Pick up a prospectus at reception

Visit ucr.rotherham.ac.uk



UCR University
Centre
Rotherham

PART OF RNN GROUP

STUDY Smart, Local

WHO ARE WE?

At University Centre Rotherham, we offer full and part-time higher-level and degree courses in the heart of Rotherham and at our partner college sites across South Yorkshire and North Nottinghamshire.

The Bridge Skills Hub, in the centre of Worksop, also offers several of our Higher Education courses. To find out more, refer to our website.

We're part of the RNN Group alongside Rotherham College, North Notts College, Dearne Valley College and a number of other subsidiary training organisations.

WHAT DO WE BELIEVE IN?

Your professional and personal fulfilment is at the heart of everything we do.

Whether you're continuing your studies, changing career path, or returning to education, we're here to help you succeed.

WHAT CAN YOU EXPECT?

Studying with us is a rewarding and fun learning experience which is all about you. By studying a higher-level qualification on your doorstep you will have access to:

- State-of-the-art facilities
- Industry-experienced staff
- Lower fees
- Fantastic student experience
- Small, friendly community
- Degrees accredited by top universities
- A supportive and caring learning environment
- Flexible learning

OPEN EVENTS

Our Open Events are access all areas to give a real feel for what University Centre Rotherham offers for your next step into Higher Education. Visitors can tour our campus and fantastic facilities, meet our support staff, Student Ambassadors and speak to our industry-experienced tutors from every department area.

VISIT US:

Wednesday 5th October 2022
3.00pm - 6.00pm

Wednesday 18th January 2023
3.00pm - 6.00pm



Wednesday 29th March 2023
3.00pm - 6.00pm

Wednesday 21st June 2023
3.00pm - 6.00pm

To book a place at an event please visit: ucr.rotherham.ac.uk/open-events

You can also visit our on-demand Open Event website at:
ucerevents.rotherham.ac.uk

YOUR Typical Week

Here is an example timetable of how an average week can look:



"I love coming into College, because I get to meet new people, train for a job I love and I receive great support from the staff."

Charlotte Dent

Level 2 Education and Childcare Services

Former student at Retford Oaks Academy

Time	Monday	Tuesday	Wednesday	Thursday	Friday
Morning	"I start my week off on placement at Thrumpton Primary Academy, in Retford. I work on placement two days a week."	"Tuesday is my second day of placement in the week. I tend to start at 8.30am and finish around 3.30pm."	"My Wednesday starts with an online English lesson from 9am - 10am, before our online Education and Childcare Services lesson starts at 10.15am."	"On Thursdays, I start at 11.15am, so I normally do a couple of hours of coursework in the morning, before my Maths lesson."	"Fridays are my busiest day as we have Education and Childcare Services lessons from 9am - 4pm."
Afternoon	"Throughout the day I support the teachers in taking care of the children and ensure that the children are happy, well fed, and clean as they learn and develop through games and play."	"Whilst on placement I get to apply the knowledge I learn in College and most importantly get hands-on experience working with children - it's been so lovely getting an insight into my future career."	"I normally grab lunch in the College bistro with my friends before meeting with our Progress Tutor Liz, as the last part of the day. Here we set academic targets, monitor progress and learn about things like mental health and wellbeing."	"At 1.15pm we have our lunch and a short break before our Education and Childcare Services lesson starts at 2pm."	"Throughout the day we'll learn about the units we're studying at the time, for example Safeguarding, Personal Hygiene or Human Rights and we'll also have a one-on-one session with our tutor to track our progress."
Evening	"After a long day of placement, I love just taking it easy with my friends, where we tend to go out for dinner."	"My flexible schedule at College allows me to take on more activities compared to secondary school. On Tuesdays I tend to volunteer at Barnardo's."	"After my PT session, I normally head home and catch up on some coursework for a couple of hours, then relax in front of the TV."	"With College finishing around 4, I try to do a few hours of volunteer work at Barnardo's before taking it easy at home."	"I like to socialise with friends, where we often go out for dinner, drinks or go for a long walk."



“The Health and Social Care course has given me loads of knowledge and confidence. After finishing my course I am planning on going to University to study Psychology.”

Jake Pashley

Level 3 Health and Social Care

Former student at Tuxford Academy

Time	Monday	Tuesday	Wednesday	Thursday	Friday
Morning	"My week starts off with a driving lesson on Monday morning, from 10am - 12pm."	"Most of my Tuesday is spent volunteering at the charity shop, where I start my day at 10am and finish at 3pm."	"Wednesday is the day I've chosen as my independent study day, so I tend to spend about 4 - 6 hours working on coursework."	"On a Thursday, I am in College all day. I start at 9am and finish at 4pm, with plenty of breaks in between lessons."	"Similar to Thursdays, my Fridays are spent in College, where we're in from 9am to 4pm."
Afternoon	"After my weekly driving lesson I go to work at Sense Charity Shop, where I volunteer alongside my College work to gain experience for future work."	"At work I get to try my hand at loads of different jobs such as sorting, steaming and pricing new donations and working the tills."	"The work that we have varies throughout the year, but a lot is preparing for Thursday's and Friday's lessons and making sure I'm all caught up."	"In our lessons we mostly cover the academic side, but also spend time in the Clinical Skill Suites, where we develop our hands-on knowledge related to patient care, CPR and our overall anatomical understanding."	"Throughout the year we cover a lot of course units and cram a lot of great knowledge in. We'll learn about units such as Human Development, Reflective Practice, Physiology and my favourites; Psychology and Sociology."
Evening	"In the evening I will do an hour or so of coursework before playing computer games with my friends."	"I like keeping up with the latest films, so after volunteering I like to go to the cinema in the evening, either with my friends or family."	"After a whole day of College work, my grandad usually takes me out for a few hours of driving to get the practice in before my test."	"Thursdays tend to be full-on, so after College, I like to just head home and relax in front of the TV."	"On a Friday, me and my friends love to have a video-game night where we unwind from the week, play loads of games and eat pizza."

What our Students Say



“I enjoy coming to College. I get to work practically in a social environment which will provide me with the qualifications I need as an Electrician.”

William Edwards

Level 3 Apprenticeship in Electrical Installation

Former student at Outwood Academy Valley

“I love coming into College to see my friends and develop my skills in video editing. I want to use the skills that I learn at College to work as an IT Technician or to work with video production.”

Hannah Agbontan

Level 2 Computing and Digital

Former student at Outwood Academy Portland





“I really enjoy the practical side of the course as it helps prepare me for my future career. My favourite part of coming into College is to work with real clients in the INsync Salon.”

Taylor Jade-Irving

Level 3 Hairdressing

Former student at Elizabethan Academy

“The Fabrication and Welding course at North Notts College helps me develop my skills in trade techniques and teaches me to use specialised tools and equipment.”

Ethan Davis

Level 2 Engineering Operations

Former student at Retford Oaks Academy



Student Support

SAFEGUARDING AND SUPPORT SERVICES

Across all of our campuses we offer a range of services and support to help you with all aspects of student life as well as helping you overcome any difficulties you may face.

OUR STUDENT SERVICES

Our Student Services, Safeguarding and Health and Wellbeing teams offer a series of services.

This includes:

- Career and progression guidance
- In-class support
- Mental health and wellbeing support
- Enrichment activities and events
- Support and guidance on personal and welfare issues

ADDITIONAL LEARNING SUPPORT

If you would like additional learning support we have a dedicated team who can agree your tailored support plan to help you make the most of your college experience and reach your full potential.

This includes:

- One-to-one support
- Access to assistive technologies
- Transition support
- Support with exams
- Specialist support team for SEND students



togetherall

DID YOU KNOW?

All of our students have free access to Togetherall - an anonymous, online mental health support service.

FINANCIAL SUPPORT

We have a number of support schemes available to take the financial pressure off, so you can enjoy your college experience and focus on your studies.

STUDENTS AGED 16-18

Students aged 16-18 when starting a course are not subject to any course fees and parents or carers will be eligible to claim benefits to help you out during your time at College.

Our dedicated Finance Team are here to help you throughout your studies. You can receive help with:

- Bursaries and course-related costs
- Travel passes
- Childcare queries
- Application queries

16 -18 COLLEGE BURSARY

You may be eligible to receive a contribution towards costs including:

- Travel
- Equipment
- Uniform
- Meals

For more information speak to a Learner Finance Officer in Student Services.

STUDENTS AGED 19+

Students aged 19 and over may need to pay fees towards their education. These fees are based on the level of funding provided by the Government. Many adult students are entitled to financial support, please contact Student Services to find out if you are eligible. You may be eligible to receive support including:

- Advanced Learner Loans
- Travel costs
- Childcare costs
- Awarding body and tuition fees
- Other associated study costs

CONTACT STUDENT SERVICES

For more information about student support, please visit the Information tab on www.nnc.ac.uk or contact us directly on **01909 504500** or info@nnc.ac.uk

Open Events

EXPLORE OUR CAMPUSES AND FIND OUT MORE ABOUT THE BENEFITS OF STUDYING WITH US AT ONE OF OUR OPEN EVENTS.



NORTH NOTTS COLLEGE

WORKSOP CAMPUS

Saturday 26th November 2022

10.00am - 12.00pm

Saturday 18th March 2023

10.00am - 12.00pm

Thursday 22nd June 2023

3.30pm - 6.30pm

RETFORD CAMPUS

Thursday 24th November 2022

3.30pm - 6.30pm

Thursday 16th March 2023

3.30pm - 6.30pm

Thursday 29th June 2023

3.30pm - 6.30pm

WE INVITE YOU TO:

- Learn more about our wide range of courses
- Meet our industry-experienced tutors
- Speak to our Student Ambassadors about their experience at college
- Explore your career options
- Attend tours of our industry-standard facilities
- Get a feel for the courses available with our interactive demos
- Ask any questions and make an application


GET IN TOUCH

nnc.ac.uk

 @NNCoFE

 @northnottscoll

 @NNC_Workshop

 @northnottscoll

CAN'T ATTEND AN EVENT?

We are always happy to talk with you about your future. We can provide tours of our facilities and individual talks to assist with your decision making.

Arrange a visit by contacting:

schoolevents@rnngroup.ac.uk

You can also find lots of useful information on our on-demand Open Event website, including our tutors speaking about their subject specialisms at: events.nnc.ac.uk

INTERESTED IN ATTENDING?

To pre-register please visit:

nnc.ac.uk/open-events

Or scan the QR Code:





OUR Courses

Business	30
Computing and Digital	38
Construction (including Bricklaying, Carpentry and Joinery, Electrical Installation and Plumbing)	44
Education and Childcare Services	58
Engineering and Motor Vehicle	68
English and Maths	82
FLEX (Department for students with SEND and High Needs)	84
Hair and Beauty (including Media Make-up)	88
Health and Social Care	100
Hospitality	108
Public Services	114
Sport	120

We make every effort to ensure information within our College course guide is accurate and a true representation of the courses and apprenticeships we are offering in 2023/24. However, we do reserve the right to make changes if necessary.

Business

IF YOU HAVE DREAMS OF STARTING YOUR OWN BUSINESS, WORKING IN A BUSINESS SETTING, OR ARE INTERESTED IN MARKETING, OUR COURSES PROVIDE THE PERFECT PLATFORM TO REACH YOUR GOALS.



Gain key skills to start a career in the business sector within finance, customer service, HR and marketing. You will learn how to present and pitch ideas, plan a budget and manage finances, how to work in a group and also benefit from visits to local businesses.

Our business courses and apprenticeships provide you with an understanding of core business areas enabling you to core important employability skills in communication, teamwork, research and time management. As well as being taught by our experienced team of professionals who will support you with your studies and future plans, you will also have

PATHWAYS	
Level 1	Vocational Studies (Health, Fitness and Business)
Level 2	Business
Level 3	Business Business Apprenticeship
Level 4/5	Foundation Degree in Tourism and Hospitality Management
Level 5	Business Higher Degree Apprenticeship
Level 6	Chartered Management Degree BA (Hons) in Business Management

the opportunity to gain practical work experience within local companies, which will develop your admin and business skills.

You will also benefit from industry-based guest speakers and visits to a range of business enterprises. Every organisation relies on business, management and finance expertise, which means you have a broad range of career opportunities to explore. Following completion of one of our courses you could go into business management, office management, human resources, business and financial planning, marketing and customer service plus much more.



Business

LEVEL 1 WC

VOCATIONAL STUDIES (HEALTH, FITNESS & BUSINESS)

This course will provide you with knowledge and understanding of four sectors; Health, Business, Sports and Public Services. If you are unsure about what route is best for you, this course offers you the chance to develop your knowledge across all of the above sectors and prepares you for progression to Level 2 in a variety of subjects leading to employment or higher study.

Core and transferable skills will be developed in; Communication, working with others, Problem solving, Managing information, Self-management and development. Practical projects will enable you to demonstrate your knowledge and understanding in a fun, enjoyable and creative style.

WHAT WILL I STUDY?

- Customer Service and Communication
- Fitness Testing
- Teamwork
- Healthy Lifestyles
- Problem Solving

WHAT CAN I DO NEXT?

You could progress to our Level 2 courses in Sport and Public Services, Level 2 Health and Social Care or Level 2 Business. Future careers include work in sectors such as the Armed Forces, Health Service, as well as the Sports or Business Industries.

ENTRY REQUIREMENTS

- GCSE grade 2 in English and maths

LEVEL 2 WC

BUSINESS

This course will provide you with a general knowledge and understanding of the business sector. The course will also support progression onto Level 3, a higher-level business apprenticeship programme, or employment within the business sector.

WHAT WILL I STUDY?

- Enterprise in the Business World
- Finance for Business
- Promoting a Brand
- Principles of Marketing
- Project Management

WHAT CAN I DO NEXT?

You could progress to Level 3 Business or into employment as a Business/HR/Event or Marketing Manager, Finance Officer or become self-employed.

ENTRY REQUIREMENTS

- Four GCSEs at grade 3 or above including English and maths



LEVEL 3 **BUSINESS**

By studying Business you will open up many exciting opportunities in a wide variety of disciplines such as finance, HR, IT, marketing and public relations. You will gain the practical, real-world skills that are highly valued by employers and universities and gain the underpinning knowledge required to progress to higher-level study, an apprenticeship or a career in the business world.

WHAT WILL I STUDY?

- Business Environment
- Marketing
- Personal and Business Finance
- Planning an Event

Plus optional units from a selection of:

- Human Resources
- Employment Law

WHAT CAN I DO NEXT?

You could progress to our BA (Hons) in Business Management, onto a Business apprenticeship or into employment as Business/HR/Event or Marketing Manager, Finance Officer or become self-employed.

ENTRY REQUIREMENTS

- Five GCSEs at grade 4 or above including GCSE English/maths at grade 5 or above

OR:

- Level 2 in Business with a Merit
- Individual applications that do not meet the entry requirements will be considered on an individual basis

**ENGLISH AND MATHS**

If you haven't achieved GCSE English and maths at grades 4 or above you will undertake these qualifications alongside your main programme.

Business



ENGLISH AND MATHS

If you haven't achieved GCSE English and maths at grades 4 or above you will undertake these qualifications alongside your main programme.

LEVEL 3 WC

BUSINESS APPRENTICESHIP

Our apprenticeships in Business will provide you with a nationally recognised qualification whilst gaining experience working with a company in a Business role. You will be allocated a personal tutor and the programme will be delivered via blended delivery consisting of individual and group sessions online and in person. We offer Level 3 apprenticeships in Business Administration and Team Leadership/Supervision.

WHAT WILL I STUDY?

- Managing People
- Project Management
- Business Fundamentals
- Planning and Organisation
- IT Skills
- Decision Making

WHAT CAN I DO NEXT?

You could progress to Higher and Degree level qualifications in Business related disciplines or go straight into employment in the Business sector as a Business/HR/Event or Marketing Officer, Finance Officer or become self-employed.

ENTRY REQUIREMENTS

- GCSE in English and maths at grade 3 or above

OR:

- Functional Skills Level 1 in English and maths or above

And

- Achieve a Level 1 or above in an Initial Skills Test





Future Careers...

IN BUSINESS

The business sector is ideal if you enjoy working in a fast-paced environment and have a passion for enterprise.

TYPES OF ROLES AVAILABLE:

HOTEL MANAGER

Hotel Managers are in charge of the day-to-day running of a hotel.

Average salary - £26,900*

Day-to-day tasks:

Set budgets, sales targets and forecast income, promote the hotel through different types of marketing, plan and organise accommodation, catering and other services offered, ensure the hotel meets licensing and health and safety laws, manage corporate bookings and events, meet and greet customers and deal with complaints.**

Working environments:

In a hotel or an office setting.

FINANCE OFFICER

Finance Officers help to manage an organisation's finances by keeping track of its income and controlling its spending.

Average salary - £23,300*

Day-to-day tasks:

Record financial transactions, produce financial forecasts, deal with payroll, invoices, expenses and VAT, resolve payment requests from external contracts, carry out financial audits, create budget reports and present reports to management.**

Working environments:

Office settings or at a client's business.

In-demand skills that commonly appear in job descriptions for roles within the business sector include*:

- Communication
- Sales
- Management
- Customer Service
- Detail Orientated

*Information from EMSI 2022

**Information from nationalcareers.service.gov.uk

Computing and Digital

LOG INTO A SUCCESSFUL CAREER IN THE COMPUTING AND DIGITAL INDUSTRIES AND QUALIFY YOURSELF IN ONE OF THE MOST SOUGHT-AFTER CAREERS.

As a computing student at North Notts College you'll study a range of areas including web and app development, animation, computer architecture and programming, digital graphics, IT repair, network management, cyber security, project management and more.

You will learn from tutors who have experience across the IT industry, from computer networking and software engineering to games development and programming, who pass on their knowledge and apply their experiences to their teaching.

Our courses are taught in specialist computer studios and offer access to industry-standard software including Adobe Creative Suite, Maya, Construct 2 and Game Maker Studio. You'll also have access to a HTC Vive, 3D printer, Raspberry Pis and a private network for network management.

We have strong links with local employers. You'll have the chance to gain work experience or industry placements and the opportunity to regularly work on live briefs set by employers.

PATHWAYS	
Level 2	Computing Digital Media
Level 3	Computing
Level 4/5	Foundation Degree in Games Design
Level 6	BA (Hons) Degree in Computing and Systems Development





Computing and Digital

LEVEL 2

COMPUTING

This course is designed for students who want to progress into the Digital industry but aren't sure what route to take. The course blends practical and creative skills and you will gain an understanding in core computing subjects from website building, graphics, programming and building PC's.

WHAT WILL I STUDY?

- Website Development
- Computer Graphics
- Installing Hardware and Software
- Developing Computer Games
- Programming
- Working in IT
- Communication in IT

WHAT CAN I DO NEXT?

You could progress to Level 3 Computing, Level 3 Business or into employment as an IT Technician, Database Administrator, Software Engineer or Web/App Developer.

ENTRY REQUIREMENTS

- Four GCSEs at grade 3 or above including English and maths

LEVEL 2

DIGITAL MEDIA

This qualification is for students who want to start a career in a Creative and Digital industry. It is an ideal qualification for students intending to progress directly to employment in the Digital Media sector or to a related Apprenticeship within the sector.

WHAT WILL I STUDY?

- Video Editing
- Digital Photography
- Games Design
- 3D Modelling
- Traditional Media
- Working to a Client Brief
- Communicating Ideas

WHAT CAN I DO NEXT?

You could progress to Level 3 Computing, Level 3 Business or into employment as a Web Developer, Games Developer, Photographer or work in Digital Marketing.

ENTRY REQUIREMENTS

- Grade 3 or above in English and maths

ENGLISH AND MATHS

If you haven't achieved GCSE English and maths at grades 4 or above you will undertake these qualifications alongside your main programme.



LEVEL 3 WC

COMPUTING

This course is designed for students who want to progress into the Digital industry. You will begin to gain specialist knowledge and skills to support your progression into employment or further study. You will have opportunities to use a variety of digital technologies and participate in a range of live projects with local businesses.

WHAT WILL I STUDY?

- Principles of Computer Science
- Fundamentals of Computer Systems
- IT security and Encryption
- Business Application of Social Media
- Games Development
- Website Development
- Software Design and Development
- Impact of computing

WHAT CAN I DO NEXT?

You could progress to a HNC/HND in Computing, Foundation Degree in Games Development or, BSc (Hons) in Computing and Systems Development or into employment as an IT Technician, Database Administrator, Software Engineer or Web/App Developer.

ENTRY REQUIREMENTS

- Five GCSEs at grade 4 or above including English and maths preferably at grade 5. GCSE computing is an advantage

OR:

- Level 2 Computing or equivalent at Merit or Distinction, and suitable GCSEs



Future Careers...

FUTURE CAREERS IN COMPUTING AND DIGITAL

The computing sector is ideal for those who like to keep up to date with the latest technology, are creative thinkers and are passionate about working in an industry which is in high demand.

TELECOM ENGINEER

Telecom Engineers work on satellite, digital TV and fibre optic systems, and install broadband, mobile and landline phone networks.

Average salary - £34,400*

Day-to-day tasks:

Set up mobile and fixed communications and data networks, repair lines and equipment on mobile masts and antennae, lay and test underground and underfloor cabling, find and fix faults including remotely using specialist software, design, build and test components and equipment, communicate with customers and businesses and update work records.**

Working environments:

At a clients home or at a business.

WEB DESIGNER

Web Designers use their creative and technical skills to design new websites and redesign existing ones.

Average salary - £31,200*

Day-to-day tasks:

Maintain and develop websites, meet clients to develop website styles, analyse statistics about who is using the website, write reports for managers and report technical projects to IT support staff.**

Working environments:

Office settings, from home or at a client's business.

In-demand skills that commonly appear in job descriptions for roles within the computing and digital sector include*:

- Communication
- Management
- Customer Service
- Problem Solving
- Innovation

*Information from EMSI 2022

**Information from nationalcareers.service.gov.uk

Construction

**OUR CONSTRUCTION COURSES
PROVIDE YOU WITH THE BUILDING
BLOCKS FOR YOUR FUTURE.**



We offer training in all the main construction trades including courses and apprenticeships in Bricklaying, Carpentry and Joinery, Electrical Installation and Plumbing. This means that you can build your career and learn a skilled trade with hands-on, practical learning that will prepare you for any construction industry.

We offer fantastic opportunities to showcase your skills at competitions and get involved in real-life projects, which will help you develop your CV and enhance your employability. As well as learning in professional workshops and being supported by industry-experienced tutors, you will also have the opportunity to complete an industry placement, which will help to develop your employability skills and industry contacts.

BRICKLAYING

You will learn all the key skills needed to become a Bricklayer, such as constructing half brick and solid walling, cavity walls, arches, solid wall piers, decorative fireplaces and chimney stacks. Other skills include trowel skills, brick bonding and building complex masonry. Alongside practical skills you will also study welfare, site procedures and health and safety in construction. You'll also get to meet key employers in the trade and carry out work experience that will enhance your CV.

CARPENTRY AND JOINERY

You will learn how to use wood machinery and power tools, explore timber technology, timber floor and roofing techniques, modern truss roof construction, all aspects of kitchen fitting, building partition walls and fitting door linings and fitting doors.

PLUMBING

Our Plumbing courses will prepare you for work in the domestic and industrial sectors. You will learn a range of practical skill-based units, plus a variety of bending and jointing techniques, as well as learning how to fit central heating systems, underfloor heating, environmental technologies and gas systems. Our students also enjoy visits to local employers where they see real-life projects in action.

ELECTRICAL INSTALLATION

You will gain hands-on knowledge and skills of domestic electrical installations allowing you to work towards a career as an Electrician. You will need to achieve a Level 2 and Level 3 course as well as a competency-based qualification to be a fully qualified Electrician.



PATHWAYS	
Level 1	Bricklaying Construction Skills Plumbing
Level 2	Bricklaying Carpentry Electrical Installation Plumbing Apprenticeship in Bricklaying Apprenticeship in Carpentry and Joinery
Level 3	Apprenticeships in Carpentry and Joinery Apprenticeship in Gas Engineering Apprenticeship in Plumbing and Domestic Heating Apprenticeship in Electrical Installation and Maintenance

Construction

LEVEL 1

BRICKLAYING

This course will introduce you to a basic knowledge and understanding of bricklaying, and provide the initial skills you'll need to progress to further study and a career in construction.

WHAT WILL I STUDY?

- Understanding Site Procedures in Construction
- Construction of Half Brick and Solid Walling
- Setting Out Regular Buildings
- Construction of Cavity Walls up to Roof-line
- Basic Trowel Skills
- Basic Brick Bonding

WHAT CAN I DO NEXT?

You could progress to Level 2 Bricklaying, Level 2 Bricklaying Apprenticeship or into employment as a Trainee Bricklayer or Construction Worker.

ENTRY REQUIREMENTS

- No formal entry requirements, but an interest in the subject and practical aptitude is needed

LEVEL 2

BRICKLAYING

This course is designed to provide you with the broad knowledge, understanding and skills to become a qualified bricklayer. You will have the chance to get your CSCS card and gain work experience on live projects with local employers.

WHAT WILL I STUDY?

- Working on Site-simulated Scaffolding
- Cladding Timber Framed Buildings
- Construction of Basic Arches and Solid Wall Piers
- Building Cavity Wall Structures
- Employability
- Teamwork

WHAT CAN I DO NEXT?

You could progress to a Level 3 Bricklaying course, an apprenticeship or into employment as a Bricklayer or Construction Operative.

ENTRY REQUIREMENTS

- GCSE grade 3 or above in English and maths
- Level 1 Bricklaying

LEVEL 2 **BRICKLAYING
APPRENTICESHIP**

On this apprenticeship you will work towards a nationally recognised qualification in Brickwork. As an apprentice Bricklayer, you will lay bricks, blocks and other types of building components in mortar to construct and repair walls, foundations, partitions, arches and other structures such as chimney stacks. You may also work on refurbishment and restoration projects.

**WHAT WILL I STUDY?**

- Energy Efficiency
- Use of Materials
- Alternative Construction Techniques
- Radial and Battered Brickwork
- Feature and Reinforced Brickwork
- Preparation of Materials
- Safe Working
- Masonry Structures
- Block Laying
- Cavity Walling

WHAT CAN I DO NEXT?

You could go into employment as a Bricklayer or Construction Operative.

ENTRY REQUIREMENTS

- You will typically be expected to have completed the Level 1 Bricklaying course
- Other relevant experience and qualifications will be considered on an individual basis
- You will also undertake initial diagnostic tests and interview before starting the course

ENGLISH AND MATHS

If you haven't achieved GCSE English and maths at grades 4 or above you will undertake these qualifications alongside your main programme.

Construction

LEVEL 1

CONSTRUCTION SKILLS

This course will introduce you to a basic knowledge and understanding of carpentry and joinery, and provide the initial skills you'll need to progress to further study and a career in construction. You will also have the opportunity to gain your CSCS card, allowing you to gain valuable work experience with our network of local employers.

WHAT WILL I STUDY?

- Exploring Timber Technology
- How to Sharpen and Use a Range of Hand Tools
- Introduction to Wood Machinery and Power Tools
- Build a Range of Frames, Using Different Joints
- Health and Safety Procedures

WHAT CAN I DO NEXT?

You could progress to one of our Level 2 Joinery courses or apprenticeships or go into employment as a Carpenter Joiner, Construction Worker or Kitchen Fitter.

ENTRY REQUIREMENTS

- There are no formal entry requirements for this course, but you should have an interest and practical aptitude for the subject

ENGLISH AND MATHS

If you haven't achieved GCSE English and maths at grades 4 or above you will undertake these qualifications alongside your main programme.

LEVEL 2

CARPENTRY AND JOINERY

This programme will introduce you to more advanced carpentry and joinery skills used in bench joinery, including constructing windows, doors and staircases. You will also have the opportunity to gain your CSCS card, allowing you to gain valuable work experience with our network of local employers.

WHAT WILL I STUDY?

- Exploring Timber Technology
- Setting and Marking out for Joinery Products
- Making Joinery Products
- Set and Operate Circular Saws
- Carpentry Maintenance
- Principles of Construction
- How to Sharpen and Use a Range of Hand Tools
- Using Wood Machinery and Power Tools including Changing Blades

WHAT CAN I DO NEXT?

You could progress to our courses in Level 3 Carpentry and Joinery or onto an apprenticeship. You could also go into employment as a Carpenter, Joiner, Construction Worker or Kitchen Fitter.

ENTRY REQUIREMENTS

- A Level 1 course in Construction
- An Interest in the Subject
- A Practical Aptitude



LEVEL 2

CARPENTRY AND JOINERY APPRENTICESHIP

On this apprenticeship you will work towards a nationally recognised qualification in either Site Carpentry or Architectural Carpentry. You will work towards your qualification whilst attending college one day per week to carry-out your practical and written assessments.

WHAT WILL I STUDY?

- Resource Testing, Calculating and Measuring
- Energy Efficiency
- Access, Interpret and Use Drawings and Specifications
- Plan and carry out Work to Commercial Standards of Quality and Speed
- Health and Safety in the workplace
- Use of Material
- Communication and Complying with Instructions and Directions from Trade Supervisors and Site Managers

WHAT CAN I DO NEXT?

You could progress to our Level 3 apprenticeship in Carpentry and Joinery or go into employment as a Carpenter, Joiner, Construction Worker or Kitchen Fitter.

ENTRY REQUIREMENTS

- GCSE English and maths at grade 2 or above, or Level 1 Functional Skills
- You will normally be expected to have completed in Level 1 Joinery or Carpentry qualification
- You will also undertake initial diagnostic tests and interview before starting the course
- Other relevant experience and qualifications will be considered on an individual basis

Construction

LEVEL 3

CARPENTRY AND JOINERY APPRENTICESHIP

On this apprenticeship you will work towards a nationally recognised qualification in either Site Carpentry or Architectural Carpentry. You will work towards your qualification whilst attending college one day per week to carry-out your practical and written assessments.

WHAT WILL I STUDY?

- Health and Safety
- Resource Measurement and Management
- Legislation and Guidance in Construction
- Communication and Leadership in Construction
- Building Information Modelling
- Site and Work Scheduling

WHAT CAN I DO NEXT?

You could go into employment as a Construction Worker, Carpenter, Joiner or Kitchen Fitter.

ENTRY REQUIREMENTS

- GCSE English and maths grade 4 or above or Level 2 Functional Skills qualifications
- You would normally be expected to have completed a Level 2 Apprenticeship in Joinery or a Level 2 qualification in Joinery
- Other relevant experience and qualifications will be considered on an individual basis
- You will also undertake initial diagnostic tests and interview before starting the course



ENGLISH AND MATHS

If you haven't achieved GCSE English and maths at grades 4 or above you will undertake these qualifications alongside your main programme.

LEVEL 2

ELECTRICAL INSTALLATION

This course, taught in our new purpose-built facility, will provide you with the hands-on knowledge and experience to start a career in the electrical industry. You will be encouraged to undertake a placement in the industry to gain a greater understanding of the trade in a real-life environment.

WHAT WILL I STUDY?

- Complex Lighting Circuits
- Radial and Ring Circuits
- Fitting Consumer Units
- Testing Electrical Circuits
- Terminating a Range of Electrical Cables
- Employability and Teamwork

WHAT CAN I DO NEXT?

You could progress to a Level 3 Electrical Installation/Maintenance Technician Apprenticeship or with further study, into employment as an Electrician, Electrical Engineer or Electrical Maintenance Engineer.

ENTRY REQUIREMENTS

- GCSE grade 4 or above in English and maths

OR:

- Level 1 Electrical qualification



Construction

LEVEL 3

INSTALLATION TECHNICIAN/ MAINTENANCE ELECTRICIAN APPRENTICESHIP

On this apprenticeship you will work towards a nationally recognised qualification as you learn how to install, maintain and repair electrical systems in industrial, commercial and domestic environments. You will also gain the knowledge and skills required to work safely with a range of electrical equipment and systems.

This includes switchboards, motors, cables, fuses, thermal relays, fault current protection switches, heating, lighting, air conditioning and metering equipment as well as crime and fire alarm systems and renewable energy technologies.



WHAT WILL I STUDY?

- Health and Safety
- Electrical Scientific Principles and Technologies
- Design and Installation Practices and Procedures
- Plan and Oversee Electrical Work Activities
- Organise and Oversee the Electrical Work Environment
- Terminations and Connections of Conductors
- Inspection, Testing and Commissioning
- Fault Diagnosis and Rectification

WHAT CAN I DO NEXT?

You could go into employment as an Installation Technician or Maintenance Electrician or continue studying at a Higher Level within a Construction or Business qualification.

ENTRY REQUIREMENTS

- Level 2 qualification in Electrical Installation, however other relevant experience and qualifications will be considered on an individual basis
- You will also undertake initial diagnostic tests and interview before starting the course

ENGLISH AND MATHS

If you haven't achieved GCSE English and maths at grades 4 or above you will undertake these qualifications alongside your main programme.

LEVEL 1

PLUMBING

This course is designed to give a basic introduction to and understanding of Plumbing.

You will develop a range of Plumbing skills that will offer a sound basis to progressing to further study, apprenticeships or employment in the industry.

WHAT WILL I STUDY?

- Understanding Different Bending Techniques
- Complete Jointing Techniques
- Fit Sinks and Taps
- Low Carbon Steel
- Employability and Team Work

WHAT CAN I DO NEXT?

You could progress to Level 2 Plumbing, an apprenticeship, or into employment as a Trainee Plumber.

ENTRY REQUIREMENTS

- No formal entry requirements but you will be expected to have a genuine interest and practical aptitude for the subject

LEVEL 2

PLUMBING

This course is designed to provide the broad knowledge and skills required to become a qualified Plumber. You will gain knowledge and develop a range of plumbing skills that will offer a sound basis to progress to further study, apprenticeships or employment in the industry.

WHAT WILL I STUDY?

- Cold Water Systems
- Hot Water Systems
- Sanitation
- Central Heating Systems
- Drainage Systems
- Various Plumbing Techniques
- Installation of Various Pipework, Materials and Components
- Develop your Practical Skills and Use of Craft Tools

WHAT CAN I DO NEXT?

You could progress to a Level 3 Gas Engineering Operative Apprenticeship or Level 3 Plumbing and Domestic Heating Technician Apprenticeship, into employment as a Trainee Plumber, or become self-employed.

ENTRY REQUIREMENTS

- Level 1 Plumbing

Construction

LEVEL 3

PLUMBING AND DOMESTIC HEATING TECHNICIAN APPRENTICESHIP

On this apprenticeship you will work towards a nationally recognised qualification as you plan, select, install, service, commission and maintain all aspects of plumbing and heating systems. You will also develop your customer service skills as you can often find yourself working in customers' homes as well as on building sites.



WHAT WILL I STUDY?

- Health and Safety
- Core Plumbing Systems
- Electrical Components and Control Systems
- Plumbing Science and Processes
- Principles of Environmental Technology Systems
- Principles of Fossil Fuels
- Customer Service
- Communication

WHAT CAN I DO NEXT?

You could go into employment as a Plumbing and Domestic Heating Technician or continue studying at a Higher Level within a Construction qualification.

ENTRY REQUIREMENTS

- GCSE English and maths at grade 4 or above or Level 2 Functional Skills qualifications
- You would normally be expected to have completed a Level 2 Plumbing Apprenticeship or a Level 2 Plumbing
- You will also undertake initial diagnostic tests and interview before starting the course
- Other relevant experience and qualifications will be considered on an individual basis

LEVEL 3 **GAS ENGINEERING
APPRENTICESHIP**

Working towards a Level 3 Diploma in Gas Engineering, you will be given the opportunity to achieve nationally recognised qualifications, whilst gaining practical skills within the workplace. You will also work towards your qualification whilst attending college one day per week for theory and practical workshops.

WHAT WILL I STUDY?

- Domestic Hot and Cold Water Systems
- Domestic Central Heating Systems
- Domestic Sanitation Systems
- Electrical Work for Plumbing and Heating
- Core Gas Safety Principles
- Install Domestic Gas Water Heaters and Wet Central Heating Appliances
- Maintain Gas Water Heaters and Wet Central Heating Appliances

WHAT CAN I DO NEXT?

You could go into employment as a Gas Engineer or continue studying at a Higher or Degree Level within a Construction qualification.

ENTRY REQUIREMENTS

- GCSE English and maths grade 4 or above or Level 2 Functional Skills qualifications
 - Level 2 Plumbing Apprenticeship
- OR:
- Level 2 in Plumbing
 - Other relevant experience and qualifications will be considered on an individual basis
 - You will also undertake initial diagnostic tests and interview before starting the course

ENGLISH AND MATHS

If you haven't achieved GCSE English and maths at grades 4 or above you will undertake these qualifications alongside your main programme.



Future Careers...

IN CONSTRUCTION

The construction sector is ideal for those who like working outside, enjoy working practically and the ability to use their own initiative.

CONSTRUCTION SITE SUPERVISOR

Construction Site Supervisors manage staff and subcontractors on building sites.

Average salary - £37,800*

Day-to-day tasks:

Supervise workers and subcontractors, help project managers to plan work, manage orders and deliveries of construction materials, organise staff work schedules, check work is carried out safely, complete records for site reports and attend site management meetings.**

Working environments:

On a construction site, at a clients' business or office.

BRICKLAYER

Bricklayers build houses, repair walls and chimneys and refurbish decorative stonework. They also work on restoration projects.

Average salary - £28,000*

Day-to-day tasks:

Measure work areas and set out the first row of bricks, mix mortar by hand or with a mechanical mixer, use a trowel to lay bricks and mortar, shape and trim bricks using hammers, chisels and power tools and check that rows are straight using a spirit level.**

Working environments:

On a construction site or at a variety of clients' homes.

In-demand skills that commonly appear in job descriptions for roles within the construction sector include*:

- Communication
- Management
- Planning
- Customer Service
- Leadership

*Information from EMSI 2022

**Information from nationalcareers.service.gov.uk

Education and Childcare Services

NURTURE, INSPIRE AND HELP CHILDREN TO REACH THEIR FULL POTENTIAL, AND TAKE YOUR FIRST STEPS TO A CAREER IN THE EARLY YEARS AND EDUCATION INDUSTRY.

If you're kind, caring and patient with lots of enthusiasm, a career in Early Years Education could be for you. On our courses and apprenticeships, you'll learn how to inspire children from birth to 11 years old to explore, learn and reach their potential.

Our industry-approved qualifications are in demand in the Early Years Education industry, as you'll learn through a combination of work placements and classroom sessions. We work with a range of settings including childminders, infant schools, specialist schools, children's hospitals and day nurseries to provide valuable work placements and a breadth of different experiences.

Whilst you study with us you'll learn key skills including communication with children and adults, safeguarding, health and safety, childhood illnesses, play and learning.

You'll also take part in practical activities such as making story sacks, cooking, healthy eating for children, painting and displays. You will also learn how to change a nappy and wash a baby safely.

PATHWAYS	
Level 1	Education and Childcare Services
Level 2	Education and Childcare Services Education and Childcare Services Apprenticeship
Level 3	Education and Childcare Services Early Years Education Apprenticeship Teaching Assistant Apprenticeship
Level 4/5	Education and Childcare Services Higher/Degree Apprenticeship
Level 5	Education and Childcare Services Higher/Degree Apprenticeship Education Higher-Degree Apprenticeship
Level 6	BA (Hons) in Early Years Childhood Studies

You'll have the chance to hear from industry experts in guest sessions and learn more about the variety of careers and settings available in childcare.

Outside of the classroom you'll have the chance to manage fundraising events and take part in inter-college competitions to showcase your skills.



Education and Childcare Services



LEVEL 1 WC

EDUCATION AND CHILDCARE SERVICES

This course is designed to stimulate interest and encourage your understanding of the skills required to care for children. Whilst studying on this course you will develop the skills needed to help children grow, learn and develop.

WHAT WILL I STUDY?

- Sharing Learning Experiences with Children
- Respecting and Valuing Children
- Science Activities for Young Children
- Musical Activities for Young Children
- Finding out about Forest Schools
- Listening to and Talking with a Young Child

WHAT CAN I DO NEXT?

You could progress to our Level 2 courses and apprenticeships in Education and Childcare Services. This course does not qualify you for immediate employment in the Education and Childcare sector.

ENTRY REQUIREMENTS

- GCSEs at grade 2 including English and maths GCSE or equivalent functional skills

ENGLISH AND MATHS

If you haven't achieved GCSE English and maths at grades 4 or above you will undertake these qualifications alongside your main programme.

LEVEL 2 WC

EDUCATION AND CHILDCARE SERVICES

This course covers a range of key subject areas that provide you with the knowledge and skills needed to care for and educate children aged between 0 and 11 years old. As part of your course you will undertake a work placement to work alongside and observe experienced practitioners.

WHAT WILL I STUDY?

- Child Development
- Play and Learning
- Roles and Responsibilities of an Early Years Practitioner/Teaching Assistant
- Nutrition for Children
- Physical Development and Physical Activity

WHAT CAN I DO NEXT?

You could progress to one of our Level 3 Education and Childcare Services apprenticeships or courses or into employment as Teaching Assistant.

ENTRY REQUIREMENTS

- Four GCSEs at grade 3 or above including maths and English at a grade 4
- A clear Disclosure and Barring (DBS) certificate



Education and Childcare Services



LEVEL 2

EDUCATION AND CHILDCARE SERVICES APPRENTICESHIP

This apprenticeship covers a range of key subject areas that provide you with the knowledge, understanding and skills needed to care for and educate children aged between 0 and 11 years old. Upon completion, you will attain a nationally recognised qualification.

WHAT WILL I STUDY?

- Child Development
- Play and Learning
- Roles and Responsibilities of an Early Years Practitioner/Teaching Assistant
- Nutrition for Children
- Physical Development and Physical Activity

WHAT CAN I DO NEXT?

You could progress to a Level 3 apprenticeship or course in Education and Childcare Services or go into employment as an Early Years Practitioner or Teaching Assistant.

ENTRY REQUIREMENTS

- Four GCSEs at grade 3 or above including maths and English at a grade 4
- A clear Disclosure and Barring (DBS) certificate

LEVEL 3 WC

EDUCATION AND CHILDCARE SERVICES

This course prepares you to become an Early Years Educator, enabling you to work with children from birth to five years and gain knowledge of children aged five to seven years. As part of your course you will undertake a work placement to work alongside and observe experienced practitioners.

WHAT WILL I STUDY?

- Theoretical Aspects of Childcare and Education
- Children's Care, Learning and Development
- Enhance Your Professional Development
- Develop Children's Literacy and Numeracy Skills
- Understand How Children Learn Through Play
- Safeguarding

WHAT CAN I DO NEXT?

You could progress to degree-level study, including our Foundation Degree in Early Childhood Studies or into employment as a Early Years Practitioner, Teaching Assistant, Nursery Assistant or Family Support Worker.

ENTRY REQUIREMENTS

- Level 2 Education and Childcare Services and English and maths at GCSE grade 4 or above/Functional Skills Level 2

OR:

- Five GCSEs at grade 4 or above including English and maths

Plus

- A clear enhanced DBS check



ENGLISH AND MATHS

If you haven't achieved GCSE English and maths at grades 4 or above you will undertake these qualifications alongside your main programme.

Education and Childcare Services



ENGLISH AND MATHS

If you haven't achieved GCSE English and maths at grades 4 or above you will undertake these qualifications alongside your main programme.

LEVEL 3 WC

EDUCATION AND CHILDCARE APPRENTICESHIPS

Our apprenticeships in Education and Childcare will provide you with a nationally recognised qualification whilst gaining experience working with an organisation in the sector. We offer Level 3 apprenticeships in Early Years Education and as a Teaching Assistant.

WHAT WILL I STUDY?

- Safeguarding
- Equality and Diversity
- Communication and Teamwork
- Curriculum
- Child Development
- Adding Value to Education

WHAT CAN I DO NEXT?

You could progress to our Foundation Degree in Early Childhood Studies or go straight into employment, either as a Teaching Assistant or Early Years Educator, depending on your apprenticeship choice.

ENTRY REQUIREMENTS

- GCSE English and maths grade 4 and above or equivalent or a Functional Skills equivalent

LEVEL 3 **TEACHING ASSISTANT APPRENTICESHIP**

On this apprenticeship you will develop the knowledge, skills and behaviours of Teaching Assistants working in Primary, Special and Secondary education across all age ranges. The apprenticeship will encompass learning about special educational needs and emotional vulnerabilities. You will learn how to effectively support the class teacher to enhance pupils' learning, ensure pupils understand the work set, know their learning objectives and stay on task in order to make progress.

WHAT WILL I STUDY?

- Understanding how Pupils Learn and Develop
- Technology
- Developing Strategies for Support
- Communication and Team Work
- Building Relationships/Embracing Change
- Adding Value to Education
- Promoting Equality, Diversity and Inclusion

WHAT CAN I DO NEXT?

You could progress to degree-level study, including our Foundation Degree in Early Childhood Studies.

ENTRY REQUIREMENTS

- GCSE English and maths Grade C and above or equivalent i.e. Functional Skills in English and maths Level 2 or must be



achieved during study

- Successful interview and initial diagnostic tests



Future Careers...

IN EDUCATION AND CHILDCARE SERVICES

The education and childcare services sector is ideal for those who are patient, caring and have a passion for helping children to develop and learn to reach their full potential.

TYPES OF ROLES AVAILABLE:

HOUSEPARENT

A Houseparent looks after the welfare, safety and pastoral care of children in care or at boarding schools.

Average salary - £21,600*

Day-to-day tasks:

Maintain discipline, standards of behaviour and manners, do administration tasks like organise rotas, travel and weekend arrangements, write reports and attend meetings, give first aid and take pupils to medical appointments.**

Working environments:

Schools or children homes.

EARLY YEARS EDUCATOR

Early Years Educators help babies and children to develop and learn in a safe and supporting setting.

Average salary - £23,400*

Day-to-day tasks:

Planning and supervising activities like art, music and cooking, helping children to learn numeracy and language skills through games, taking children on trips, observing children and writing reports, making sure children are safe and well and speaking with parents and carers.**

Working environments:

Nurseries, children's homes or hospitals.

.....
In-demand skills that commonly appear in job descriptions for roles within the education and childcare services sector include*:

- Teaching
 - Communication
 - Management
 - Enthusiasm
 - Planning
-

*Information from EMSI 2022

**Information from nationalcareers.service.gov.uk

Engineering and Motor Vehicle

IF YOU'RE INTERESTED IN BECOMING AN ENGINEER, WELDER, ELECTRICIAN OR MOTOR VEHICLE TECHNICIAN, YOU CAN LEARN YOUR TRADE IN OUR INDUSTRY-STANDARD FACILITIES USING THE LATEST EQUIPMENT.

You can choose from a range of Engineering and Motor Vehicle courses and apprenticeships, all taught by industry-experienced staff who have strong links with the sector. These courses will prepare you to move straight into employment in the industry or onto Higher Education.

ENGINEERING

You will train in our high-spec workshops with modern equipment which reflect the tools and resources used in industry, and be taught by industry-experienced tutors who bring a wealth of knowledge and enthusiasm to their teaching. Each area of engineering is unique and our courses will develop your practical skills and theoretical understanding to allow you to specialise in your chosen area.

MOTOR VEHICLE

If you are interested in a career working with motor vehicles you can train in our high-spec modern facilities, which reflect those used in industry. You will gain practical skills and learn how to fix and diagnose faults in all components of a traditional motor vehicle. You will also have the opportunity to gain experience on hybrid and electric vehicles – equipping you with sought after, future-proofed and in-demand skills in a fast-changing industry.

PATHWAYS - ENGINEERING	
Entry Level	Motor Vehicle
Level 1	Engineering Motor Vehicle
Level 2	Engineering Operations Motor Vehicle Engineering Apprenticeship Motor Vehicle Apprenticeship
Level 3	Advanced Manufacturing Engineering Apprenticeships Motor Vehicle Apprenticeship
Level 4/5	HNC/HND in Electrical and Electronic Engineering HNC/HND in General Engineering HNC/HND in Mechanical Engineering



Engineering and Motor Vehicle

LEVEL 1

ENGINEERING

This course is designed to give you an introduction to the Engineering industry and enables you to explore various careers. You will develop practical skills and knowledge of engineering principles.

WHAT WILL I STUDY?

- Health and Safety in an Engineering Environment
- Tools and Equipment used in Engineering
- The Engineering Industry
- Fabrication and Welding
- Turning and Milling
- Hand Fitting

WHAT CAN I DO NEXT?

You could progress to Level 2 Engineering or with further study, into employment as a Machinist, Maintenance Technician, Welding Operative, Fabricator, Mechatronics Technician, Technical Support or Product Designer.

ENTRY REQUIREMENTS

- GCSE grade 2 in English and maths



ENGLISH AND MATHS

If you haven't achieved GCSE English and maths at grades 4 or above you will undertake these qualifications alongside your main programme.

LEVEL 2 

ENGINEERING APPRENTICESHIP

This apprenticeship will help you develop the fundamental skills and knowledge required to work successfully in the Engineering industry. With these skills you will gain experience in Engineering operations, which are key to the success of the Manufacturing and Engineering sector. Upon completion of this course you will attain a nationally recognised qualification.

We can help you find the employment you need to start this Apprenticeship

WHAT WILL I STUDY?

- Working Safely
- Carrying out Engineering Activities
- Engineering Principles
- Using and Communicating Information
- Engineering Environment Awareness
- Engineering Techniques

WHAT CAN I DO NEXT?

You could progress to one of our Level 3 apprenticeships or courses in Engineering or into employment as an Engineering Operative.

ENTRY REQUIREMENTS

- GCSE English and maths grade 4 or above, or equivalent
- You and your employer must be able to demonstrate a strong willingness and commitment to this programme of study

LEVEL 3 

ENGINEERING APPRENTICESHIPS

Our Level 3 Engineering apprenticeships prepare you for a career in the Engineering sector, where you could be working with mechanical, electrical, electronic, electromechanical and fluid power products and systems. We offer Level 3 apprenticeships as an Engineering Technician and Metal Fabricator. Upon completion of this apprenticeship you will attain a nationally recognised qualification.

WHAT WILL I STUDY?

- The topics you will study will vary depending on the apprenticeship and pathway you choose. For more information, please visit nnc.ac.uk/course-type/apprenticeships

WHAT CAN I DO NEXT?

You can progress to our Level 4 courses in Engineering, our HNC/HNDs in Engineering or into employment as an Engineering Technician or Metal Fabricator.

ENTRY REQUIREMENTS

- Entry requirements vary depending on apprenticeship. See nnc.ac.uk/course-type/apprenticeships for more information.

Engineering and Motor Vehicle

LEVEL 2

ENGINEERING OPERATIONS

This course is designed to give you an introduction to the Engineering industry and enables you to explore various careers. You will develop practical skills and knowledge of engineering principles.

WHAT WILL I STUDY?

- Working Safely
- Working Efficiently and Effectively
- How to Use MIG and TIG Welding Equipment
- Producing Platework Components
- Bench Fitting Skills
- Turning Skills
- Computer Aided Design (CAD) Techniques

WHAT CAN I DO NEXT?

You could progress to Level 3 Engineering, an apprenticeship or into employment as an Electrical/Maintenance or Mechanical Engineer.

ENTRY REQUIREMENTS

- GCSE English and maths at grade 3 or above

ENGLISH AND MATHS

If you haven't achieved GCSE English and maths at grades 4 or above you will undertake these qualifications alongside your main programme.

LEVEL 3

ADVANCED MANUFACTURING ENGINEERING

This course is designed for individuals that are looking to pursue a career in one of the many aspects of Engineering. On the course you will gain an in-depth understanding of the engineering industry and will receive a recognised qualification which will support you in to employment.

WHAT WILL I STUDY?

- Mechanical principles
- Maths for Engineers
- Advanced Engineering
- Engineering Project
- Computer Aided Design (CAD)
- Materials

WHAT CAN I DO NEXT?

You could progress to an Engineering Extended Diploma, an apprenticeship, higher education or into employment as a Manufacturing Engineer.

ENTRY REQUIREMENTS

- Five GCSE's at grade 4 or above including English, science and maths





Future Careers...

IN ENGINEERING

The engineering sector is ideal for those who have the ability to come up with new ways of doing things, have problem-solving skills and enjoy working practically.

TYPES OF ROLES AVAILABLE:

MECHANICAL ENGINEER

Mechanical Engineers develop and design the components and machinery used in manufacturing, construction and other industries.

Average salary - £32,000*

Day-to-day tasks:

Turn research ideas into technical plans using computer aided design/modelling (CAD/CAM), research and assess new products and innovations, present design plans and data, oversee maintenance programmes and quality control and manage technicians.**

Working environments:

At a client's business, in an office or factory.

WELDER

Welders cut, join and shape metal plate, pipework and composite materials in the aerospace, construction and civil engineering industries.

Average salary - £26,900*

Day-to-day tasks:

Follow engineering drawings and instructions for each job, check dimensions and thickness of materials to be welded, prepare and set out sections to be joined or repaired, operate welding equipment, inspect and test welds and join using precision measuring instruments and dismantle and cut up metal in structures that are being demolished.**

Working environments:

In a workshop, on a construction site or on a demolition site.

In-demand skills that commonly appear in job descriptions for roles within the engineering sector include*:

- Communication
- Management
- Leadership
- Customer Service
- Problem Solving

*Information from EMSI 2022

**Information from nationalcareers.service.gov.uk

Engineering and Motor Vehicle



ENTRY LEVEL WC

MOTOR VEHICLE

This course is designed to give you an introduction to the automotive industry. It is a blend of theory and practical and enables you to develop basic skills needed to pursue further education at Level 1.

WHAT WILL I STUDY?

- Health and Safety
- Hand Tools
- Engines and Transmission
- Chassis Systems
- Vehicle Valeting
- Hybrid and Electric Vehicle Technology

WHAT CAN I DO NEXT?

You could progress to our Level 1 Motor Vehicle course.

ENTRY REQUIREMENTS

- No formal entry requirements

ENGLISH AND MATHS

If you haven't achieved GCSE English and maths at grades 4 or above you will undertake these qualifications alongside your main programme.

LEVEL 1 **MOTOR VEHICLE**

This course is designed to provide you with a basic knowledge and understanding of motor vehicles and allow you to develop a range of related skills.

You will also have the opportunity to gain additional experience working on hybrid and electric vehicles as well as learn key business and enterprise skills.

WHAT WILL I STUDY?

- Health and Safety
- Vehicle Maintenance
- Steering
- Engines
- Suspension
- Braking Systems
- Hybrid and Electric Vehicle Technology

WHAT CAN I DO NEXT?

You could progress to our Level 2 Motor Vehicle course, one of our Motor Vehicle apprenticeships or into employment as a Motor Vehicle Technician/Mechanic.

ENTRY REQUIREMENTS

- No formal entry requirements

LEVEL 2 **MOTOR VEHICLE**

This course covers the full range of routine vehicle fitting procedures. You will gain the essential knowledge and skills required to work on a wide range of vehicles in all types of garages, dealerships and fast fit businesses. You will study both the theory and practical aspects of vehicle fitting to help you gain a broad knowledge and understanding of the skills associated with working in a garage.

WHAT WILL I STUDY?

- Engines
- Transmission
- Chassis Systems
- Electrical Systems
- Simple Fault Diagnosis and Repair
- Routine Servicing and Maintenance
- Hybrid and Electric Vehicle Technology

WHAT CAN I DO NEXT?

You could progress to a Motor Vehicle apprenticeship or into employment as a Motor Vehicle Technician/Mechanic or Fast Fit Technician.

ENTRY REQUIREMENTS

- Level 1 Motor Vehicle Qualification
- Four GCSEs at grade 3 or above including English and maths

Engineering and Motor Vehicle

LEVEL 2

MOTOR VEHICLE APPRENTICESHIP

On this apprenticeship you will carry out a range of services and repairs to cars, car derived vans and light goods vehicles, working in an Auto-care or 'Fast-Fit' centre, which may be part of a national chain or operated by a regional/local independent group/owner. Upon completion, you will attain a nationally recognised qualification.

WHAT WILL I STUDY?

- Tyre Legislation and Technical Information
- Fundamentals of Specific Vehicle Systems
- Vehicle System Component Replacement
- Vehicle 4-wheel Geometry Principles
- 4-wheel Geometry Operations
- Basic Consumer Legislation
- Health and Safety Legislation
- Hybrid/electric Vehicle Systems

WHAT CAN I DO NEXT?

You could progress to our Level 3 Motor Vehicle Apprenticeship or go into employment as an Autocare Technician.

ENTRY REQUIREMENTS

- Level 1 or equivalent in English and maths
- A genuine interest in the occupation

LEVEL 3

MOTOR VEHICLE APPRENTICESHIP

On this apprenticeship you will carry out a range of services and repairs to cars, car derived vans and light goods vehicles. You will work on all the systems found within the vehicle, including replacing simple parts to solving complex faults with the use of diagnostic methods and equipment. Upon completion, you will attain a nationally recognised qualification.

WHAT WILL I STUDY?

- Routine Servicing and Inspection Procedures
- Steering and Suspension Geometries
- Electrical Circuit Requirements and Calculations
- Common Fault Types, Causes and Effects
- Vehicle Emissions and Legal Requirements
- Alternative Fuels and Hybrid and Electric Systems

WHAT CAN I DO NEXT?

You can go into employment as a Motor Vehicle Service and Maintenance Technician in a car dealership, either specialising in one manufacturer or an independent garage.

ENTRY REQUIREMENTS

- Level 2 or equivalent in English and maths
- A genuine interest in the occupation
- The ability to work an organised and methodical way

ENGLISH AND MATHS

If you haven't achieved GCSE English and maths at grades 4 or above you will undertake these qualifications alongside your main programme.



Future Careers...

IN MOTOR VEHICLE

The Motor Vehicle sector is ideal for those who have an enthusiasm for repairing cars, have problem-solving skills and the ability to use their own initiative.

TYPES OF ROLES AVAILABLE:

VEHICLE TECHNICIAN

Vehicle Technicians repair and service cars and vans.

Average salary - £27,900*

Day-to-day tasks:

Using and maintaining machines and tools, finding and diagnosing faults, speaking to customers about their vehicle, repairing and replacing faulty parts, carrying out services and updating vehicle service records.**

Working environments:

Garage settings.

MOTOR VEHICLE FITTER

Motor Vehicle Fitters repair and replace worn and damaged tyres, exhausts, batteries and parts.

Average salary - £22,400*

Day-to-day tasks:

Testing batteries, checking tyres and exhausts, replacing or repairing faulty parts, balancing and realigning wheels, repairing punctures and providing customer advice.**

Working environments:

Garage and workshop settings.

In-demand skills that commonly appear in job descriptions for roles within the motor vehicle sector include*:

- Communication
- Customer Service
- Sales
- Detail Oriented
- Management

*Information from EMSI 2022

**Information from nationalcareers.service.gov.uk

English and Maths

MAKE EVERYDAY LIFE EASIER WITH ESSENTIAL ENGLISH AND MATHS SKILLS.



English and maths skills are essential for work and everyday life, as they enhance your career prospects and open the door to further study. If you didn't achieve your GCSE English and maths at school, or if you'd like to improve your grade, you can study for these alongside your chosen course.

Our English and maths classes are taught in large, bespoke Maths and English Zones (MEZOs) at each of our College campuses where you can work on personalised learning activities.

You'll learn from a talented team of tutors who tailor their teaching to your learning needs. Sessions include: taught lessons, independent learning, group work and online learning for greater flexibility.

If you have already achieved a GCSE grade 4 or equivalent in maths and English, you can choose to study these subjects alongside your chosen course to further improve your skills*.

*If you're looking to improve your grades please note you may have to contribute towards exam fees.



Flex

**LEARN THE SKILLS YOU NEED TO LIVE
INDEPENDENTLY OR PROGRESS TO
EMPLOYMENT OR VOLUNTEERING WORK.**



Our FLEX Department is for students with Special Educational Needs and Disabilities (SEND) or High Needs. You can choose from one of our four project-led pathways depending on your personal aims and ambitions; Independent Living, Horizons*, Pre-internships or Supported Internships with each pathway intended to help you towards one of two key goals – adulthood and independence or employment. We'll also help you with your English, maths and IT skills.

We work closely with the other Colleges in our Group to provide access to as many experiences as possible, including theatre and drama productions at Rotherham College and experience in Animal Care, Horticulture and use of the forest school at Dearne Valley College, so whichever one of our Colleges you're based at you'll have the opportunity to meet people from other areas and enjoy new experiences.

We have strong partnerships with local businesses and organisations and work with them to get involved in community projects. You'll have the chance to showcase your skills in competitions such as Sewhat and inter-college competitions. You'll also have the chance to take part in a wide range of health and wellbeing activities, from fitness classes to music and art therapy sessions.



FLEX WC

INDEPENDENT LIVING

This programme is designed to help you learn the skills you need to look after yourself and your home, and live independently within the community. The programme is for our most vulnerable and complex students with SEND and High Needs to learn and develop the knowledge, skills and behaviours required to become as independent as their individual abilities allow.

On this pathway you will attend College 15 hours per week, typically over three days.

WHAT WILL I STUDY

- Household Skills including Shopping and Cooking
- Personal Care and Speaking Up for Yourself
- Personal Development and Leisure Activities
- How to Use Public Transport
- Speaking and Listening
- English, Maths and IT

WHAT CAN I DO NEXT?

You could move on to another FLEX pathway such as Horizons, Pre-Internships or Supported Internships. You may also progress to supported living or semi-independent living, depending on your individual abilities.

ENTRY REQUIREMENTS

- There are no formal entry requirements for this course. However, this course is exclusively for students with SEND or High Needs

FLEX WC

HORIZONS

On this course you will have the opportunity to try taster sessions in different vocational areas, giving you the chance to get a feel for the sectors that you are most interested in.

You will develop your employability and personal and social development skills. A focus is placed on building confidence and communication skills to aid your mental health.

On this pathway you will attend College 15 hours per week, typically over three days.

WHAT WILL I STUDY

- Employability Skills
- Personal and Social Development Skills
- Independence Skills
- Communication
- Study Skills
- Vocational Specific Units/Skills
- English, Maths and IT

WHAT CAN I DO NEXT?

You may move on to another FLEX pathway such as Pre-internships or Supported Internships or into a vocational study programme. You may also progress to supported living or semi-independent living depending on your individual abilities.

ENTRY REQUIREMENTS

- There are no formal entry requirements for this course. However, this course is with a focus on students with low self-esteem, who are deemed vulnerable and who may have specific social, emotional and mental health and/or behavioural needs

FLEX WC

PRE-INTERNSHIPS

Pre-internships are designed to introduce students with SEND and High Needs to working life and are offered in a range of different sectors including Construction, Business Administration, Hair and Beauty and Motor Vehicle.

The aim is to support you to develop the confidence and knowledge, skills and behaviours to become employable in your chosen sector.

On a pre-internship you will attend College for two days (10 hours) and work placement for one day (5 hours) each week.

WHAT WILL I STUDY

- Employability Skills
- Personal Development and Independence
- English, Maths and IT

WHAT CAN I DO NEXT?

You may move on to another FLEX pathway such as Supported Internships or move into employment or volunteering in your chosen sector.

ENTRY REQUIREMENTS

- There are no formal entrance requirements for this course. However, this course is specifically for students with SEND and High Needs

FLEX WC

SUPPORTED INTERNSHIPS

A Supported Internship is a study programme aimed at giving young people (aged 16-24) with an Education, Health and Care Plan experience in the workplace within a supported environment.

It is a platform for you to further develop your skills and experience in a structured way. You will take part in the programme with one of our partner employers and spend at least two days (10 hours) per week working in different areas to gain valuable experience with the support of an on-site Job Coach.

You will spend one day (5 hours) at College each week.

WHAT WILL I STUDY

- Employability Skills
- Personal Development and Independence
- English, Maths and IT
- This course has an emphasis on being out in the workplace developing valuable employability skills, you will spend the majority of your time with an employer

WHAT CAN I DO NEXT?

You could move into employment, a voluntary employment or potentially move into an apprenticeship in your chosen sector.

ENTRY REQUIREMENTS

- To start a Supported Internship you will need an Education, Health and Care Plan (EHCP), and be committed to participating fully in a work placement adhering to employer expectations and following policies

Hair and Beauty

BRUSH UP YOUR SKILLS IN OUR COMMERCIAL AND TRAINING HAIR AND BEAUTY SALONS, AND STYLE A CAREER IN BEAUTY THERAPY, HAIRDRESSING OR MEDIA MAKE-UP.

With our range of courses in Beauty Therapy and Hairdressing at our Worksop campus and Hair and Media Make-up courses at the Retford Post-16 Centre, you can choose a specialist area that most interests you. Our courses combine practical, hands-on learning with theory-based sessions on anatomy and physiology and underlying conditions. You'll also have the chance to work on real-life clients in our commercial salon and showcase your skills in events and competitions.

You'll train in our industry-standard training salons that replicate what it's like to work in a real salon environment, and you'll learn from staff who still practice as Hairdressers, Beauty Therapists and Make-up Artists.

HAIRDRESSING

Learning from our experienced staff in industry-standard training and commercial salons, you will study everything from the science behind hair conditions to health and safety and practical hair techniques. You will have the opportunity to work within our commercial salon, INsync, providing salon treatments and services to paying customers. You will also have the chance to undertake a work placement in a salon environment.

You can further your knowledge and skills by undertaking optional short courses covering skills such as hair extension application, further preparing you for a career in the industry.

BEAUTY THERAPY

Study all aspects of beauty therapy, both theoretical and practical, in our commercial salons using the latest industry-standard equipment and products. You will study everything from anatomy and physiology to health and safety and gain practical skills and techniques to carry out facials, manicures, pedicures, hair removal and more. You will also learn how to manage a salon and run a reception.

You will have the chance to undertake work placements with our network of local employers in the beauty industry including salons, spas and other settings, building your experience and allowing your CV to shine.

MEDIA MAKE-UP

Learn the skills required for a career working in the fashion, performance and photography industries as a Make-up Artist in our dedicated Hair and Media Make-up salons at the Retford Post-16 Centre. You will learn airbrush make-up



and cosmetic camouflage, prosthetics and special effects techniques, creative hairdressing and styling, face and body art and more.

Build your knowledge and skills as you take part in regular masterclasses, hear from industry guest speakers and learn from experienced tutors who continue to work as Make-up Artists outside of their teaching commitments. Boost your portfolio and industry experience through working on a range of productions with local theatre groups and schools, and showcase your skills in industry competitions such as World Skills UK.

PATHWAYS	
Entry Level	Hair and Beauty
Level 1	Hair and Beauty
Level 2	Hair and Beauty Beauty Studies Beauty Therapy Hairdressing Media Make-up Apprenticeship in Hairdressing
Level 3	Hairdressing Beauty Therapy Media Make-up Apprenticeship in Hairdressing
Level 4/5	Foundation Degree in Theatrical Hair and Media Make-up HNC/HND in Performing Arts: Specialist Make-up
Level 6	BA (Hons) Degree in Theatrical Media Make-up

Hair and Beauty

ENTRY LEVEL WC RP

INTRODUCTION TO HAIR AND BEAUTY

This course will give you a basic understanding of some of the tools and equipment used in the hair and beauty industry. The course is focused on developing your skills around personal hygiene and grooming alongside interpersonal and communication skills.

WHAT WILL I STUDY?

- An Introduction to the Hair and Beauty Sector
- Principles of Hygiene
- Preventing Cross-infection
- Personal Care and hygiene
- Painting Nails
- Caring for Your Skin
- Shampoo and Condition Hair
- Blow-dry and Finish Hair

WHAT CAN I DO NEXT?

You could progress to our Level 1 course in Level 1 Hair and Beauty.

ENTRY REQUIREMENTS

- GCSE grade 1 in English and maths

LEVEL 1 RP

HAIR AND BEAUTY

This course provides a foundation platform for students wanting to enter the Hair and Beauty industry. You'll develop skills, techniques and knowledge that will prepare you for further vocational study at Level 2 in Hair and Beauty. You'll learn in our training salons and gain the practical skills required to create a total look using colour.

WHAT WILL I STUDY?

- Apply Face and Body Art Make-up
- Varied Hairdressing Skills
- Knowledge, Skills and Behaviours to Work as a Make-up Artist
- Beauty Therapy Skills including Nail Treatments
- Anatomy and Physiology

WHAT CAN I DO NEXT?

You could progress to our Level 2 courses in Hair and Beauty, Beauty Therapy, and Hairdressing or our Level 2 Hair Apprenticeship.

ENTRY REQUIREMENTS

- Three GCSEs at grade 3 or above including English and maths

All students will need a relevant kit and uniform upon enrolment on these courses. During your course interview your tutor will advise exactly what is required.



ENGLISH AND MATHS

If you haven't achieved GCSE English and maths at grades 4 or above you will undertake these qualifications alongside your main programme.

LEVEL 1 WC

EXTENDED CERTIFICATE IN HAIR AND BEAUTY

This course is designed to provide you with basic hairdressing and beauty therapy practical skills and knowledge, as well as an insight to the industry. You'll gain skills of both the practical application of hair and beauty techniques and the knowledge of treatments and clients. You'll also have the opportunity to undertake additional qualifications alongside your main programme.

WHAT WILL I STUDY?

- Shampooing
- Blow Drying and Styling
- Health and Safety
- Nail Treatments
- Nail Art
- Create an Image

WHAT CAN I DO NEXT?

You could progress to Level 2 Hair and Beauty, Level 2 Hairdressing, Level 2 Beauty Therapy or Level 2 Media Make-up.

ENTRY REQUIREMENTS

- GCSE grade 2 in English and maths
- OR:
- Entry Level Hair and Beauty

LEVEL 2 WC

HAIR AND BEAUTY

This mainly practical-based course is the perfect step for students looking to gain knowledge and skills in the Hair and Beauty sector. You'll learn a variety of techniques and skills in hairdressing, beauty therapy and make-up and have the chance to choose units that suit your interests and skills.

WHAT WILL I STUDY?

- Shampooing
- Blow Drying and Styling
- Health and Safety
- Nail Treatments
- Nail Art
- Create an Image

WHAT CAN I DO NEXT?

You could progress to Level 2 Hairdressing, Level 2 Beauty Therapy or Level 2 Media Make-up. You could also go into employment as a Hairdresser, Beauty Therapist, Make-up Artist, Nail Technician, Massage Therapist or Cosmetic Retail Assistant.

ENTRY REQUIREMENTS

- GCSE grade 2/3 in English and maths
- OR:
- Level 1 Hair and Beauty

Hair and Beauty

LEVEL 2

BEAUTY STUDIES

This course is an opportunity to learn the skills required to work in a salon environment.

You'll learn a variety of practical treatments and gain a theoretical understanding of anatomy and physiology, health and safety.

WHAT WILL I STUDY?

- Facial Skin Care and Massage
- Eye Treatments - Tinting and Shaping
- Manicure Treatments
- Pedicure Treatments
- Waxing
- Make-up
- Reception Duties
- Retail Sales and Treatments
- Anatomy and Physiology/Cosmetic Science
- Health and Safety

WHAT CAN I DO NEXT?

You could progress to Level 3 Beauty Therapy or Level 3 Media Make-up. You could also go into employment as a Beauty Therapist, Spa Therapist, Freelance Therapist or Massage Therapist.

ENTRY REQUIREMENTS

- Three GCSEs at grade 3 or above

OR:

- Successful completion of a Level 1 Hair and Beauty
- Good communication skills and attitude to work

LEVEL 2

BEAUTY THERAPY

This course will provide you with a variety of practical-based skills alongside a theoretical understanding of anatomy, physiology and health and safety. On successful completion of this course you can become a member of the British Association of Beauty Therapy and Cosmetology (BABTAC) or the Federation of Holistic Therapists (FHT).

WHAT WILL I STUDY?

- Facial Skincare
- Eye Treatments
- Manicure Treatments
- Pedicure Treatments
- Waxing
- Make-up
- Retail Sales and Treatments
- Anatomy and Physiology/Cosmetic Science

WHAT CAN I DO NEXT?

You could progress to Level 3 Beauty Therapy or Level 3 Media Make-up. You could also go into employment as a Beauty Therapist, Spa Therapist, Freelance Therapist, Massage Therapist or Beauty Consultant.

ENTRY REQUIREMENTS

- Four GCSEs at grade 4 or above including English and maths (Science is desirable)

OR:

- Level 1 Hair and Beauty
- Good communication skills

ENGLISH AND MATHS

If you haven't achieved GCSE English and maths at grades 4 or above you will undertake these qualifications alongside your main programme.



LEVEL 3 wc

BEAUTY THERAPY

This course is ideal for those wanting to work as either an employed or self-employed Beauty Therapist. You'll learn a variety of practical treatments and gain an in-depth knowledge of anatomy, physiology and pathologies. As part of the course you'll undertake a work placement in a beauty salon or spa.

WHAT WILL I STUDY?

- Client Care and Consultation
- Skin and Body Analysis
- Swedish Massage Therapy
- Apply Stone Massage
- Provide Self Tanning
- Facial Electrical Treatment
- Body Electric Treatments
- Electrical Science
- Apply Individual Permanent Lashes
- Anatomy and Physiology for the Face and Body Systems

WHAT CAN I DO NEXT?

You could progress to degree-level study including a HNC/HND in Specialist Make-up, Foundation Degree in Theatrical Hair and Media Make-up or BA (Hons) Theatrical Hair and Media Make-up (Top up). You could go into employment as a Beauty Therapist, Salon Manager, Spa Therapist or Cruise Ship Beauty Therapist.

ENTRY REQUIREMENTS

- Four GCSEs at grade 4 or above including English and maths (Science at grade 4 is desirable)
- Level 2 Beauty Therapy or Media Make-up
- Excellent client care and communication skills

All students will need a relevant kit and uniform upon enrolment on these courses. During your course interview your tutor will advise exactly what is required.

Hair and Beauty

LEVEL 2

HAIRDRESSING

You'll learn all aspects of the hairdressing industry by developing your skills on family, friends and peers, aiming towards working in our commercial salons on real paying clients.

WHAT WILL I STUDY?

- Client Consultation
- Shampooing and Conditioning
- Styling Hair
- Creating a Theme-based Image
- Basic Cutting Techniques
- Perming and Neutralising
- Basic Hair Colouring Techniques
- Salon Reception Duties
- Promoting Products and Services

WHAT CAN I DO NEXT?

You could progress to a Level 3 Hairdressing course or go into employment as a Hairdresser, Hair Stylist, Colour Technician, Hair Extension Specialist or a self-employed Hairdresser.

ENTRY REQUIREMENTS

- Three GCSEs at grade 3 or above
- OR:
- Successful completion of a Level 1 Qualification in Hair and Beauty Therapy or Media Make-up
 - Workshop with a Course Tutor
 - Good communication skills

LEVEL 2

HAIR PROFESSIONAL APPRENTICESHIP

This Apprenticeship programme gives you the opportunity to gain nationally recognised qualifications whilst working within the industry. You will attend College one day a week, whilst the rest of the course is undertaken on the job in your workplace. The Apprenticeship is made up of two components, which include a technical qualification and a knowledge based qualification.

WHAT WILL I STUDY?

- Consultation
- Shampoo and Condition and Treat the Hair and Scalp
- Cut Hair Using a Range of Techniques to Create a Variety of Looks
- Styling and Finishing Hair
- Colouring and Lightening Hair
- Perming Hair
- Relaxing Hair
- Hair Extension Services

WHAT CAN I DO NEXT?

You could progress to our Level 3 Hairdressing courses and apprenticeships or into employment as a Hairdresser, Hairstylist, Colour Technician, Hair Extension Specialist or a self-employed Hairdresser.

ENTRY REQUIREMENTS

- GCSE English and maths at grade 2
- OR
- Above of Functional Skills Level 1
 - Successful interview and initial diagnostic tests



LEVEL 3

HAIR PROFESSIONAL APPRENTICESHIP

This apprenticeship will ensure that you have the desired skills and knowledge to work effectively as a Senior Hairdresser/Stylist. On successful completion of this course you will be eligible to become a State Registered Hairdresser (SRH) with the Hairdressing Council.

WHAT WILL I STUDY?

- Health and Safety in the Salon
- Hairdressing Consultation
- Haircutting Services
- Hair Colouring and Correction Services
- Setting and Dressing Services
- Blow Drying and Finishing Services

WHAT CAN I DO NEXT?

You could progress to degree-level study, including HNC/HND in Specialist Media Make-up or go into employment as a Freelance Hair Stylist, Salon Hair Stylist, Colour Technician, Hair Extension Stylist, Salon Manager or Cruise Ship Hair Specialist.

ENTRY REQUIREMENTS

- Level 2 Hairdressing qualification
- GCSEs at grade 4 or above in English and maths
- Workshop with course tutor
- Good communication skills

LEVEL 3

HAIRDRESSING

This course will ensure you have the desired knowledge and skills to work effectively as a Senior Hairdresser/Stylist. You will gain high-level practical skills such as advanced cutting, colouring and styling techniques. Once you complete this course you'll be eligible to become a State Registered Hairdresser (SRH) with The Hairdressing Council.

WHAT WILL I STUDY?

- Health and Safety in the Salon
- Hairdressing Consultation
- Hair Cutting Services
- Hair Colouring Services
- Setting and Dressing Services
- Blow-drying and Finishing Services

WHAT CAN I DO NEXT?

You could progress to a degree-level study including a HNC/HND in Specialist Make-up or go into employment as a Freelance Hair Stylist, Salon Hair Stylist, Colour Technician, Hair Extension Specialist, Salon Manager or Cruise Ship Hair Specialist.

ENTRY REQUIREMENTS

- Level 2 Hairdressing
- GCSEs at grade 4 or above in English and maths
- Workshop with a course tutor
- Good communication skills

Hair and Beauty

LEVEL 2 RP

MEDIA MAKE-UP

This course is designed for students wanting to pursue a career in Media Make-up, providing hair and make-up services in the Media, Theatre, Fashion and Photographic industries. You'll develop the knowledge, understanding and skills to plan for and provide make-up applications, hair preparations services, fashion and editorial make-up with extended knowledge in face and body art.

WHAT WILL I STUDY?

- Eyelash and Brow Treatments
- Body Art Design
- Make-up Application
- Art of Photographic Make-up
- Period Make-up
- Hairstyling
- Dressing Hair and Making a Hair Addition
- Anatomy and Physiology
- Cosmetic Science

ENGLISH AND MATHS

If you haven't achieved GCSE English and maths at grades 4 or above you will undertake these qualifications alongside your main programme.



WHAT CAN I DO NEXT?

You could progress to Level 3 Media Make-up, Level 3 Hairdressing, Level 3 Beauty Therapy or apprenticeships in Hair and Beauty. You could go into employment as a Freelance Make-up Artist, Brand Make-up Artist or Theatre and Film Artist.

ENTRY REQUIREMENTS

- Three GCSEs at grade 3 or above including English and maths
- Excellent communication skills and commitment to the course
- Flexibility to work on location in the evenings and on weekends

LEVEL 3 RP

MEDIA MAKE-UP

This course is designed for students who wish to pursue a career as a Make-up Artist, providing hair and makeup services in the media, theatre, performing arts, fashion and photographic industries. On this course, you'll work with employers and undertake meaningful activities to gain valuable industry experience.

You will also complete 32 hours of work experience over the academic year.

WHAT WILL I STUDY?

- Designing and Creating Images for Fashion Shows and Photography Shoots
- Airbrush Make-up
- Face and Body Art
- Cosmetic Camouflage
- The Application of Prosthetic Pieces and Bald Caps
- Special Effects Techniques
- Creative Hairdressing Design Skills, Styling and Dressing Hair and Fitting Postiche
- Anatomy and Physiology
- Cosmetic Science

All students will need a relevant kit and uniform upon enrolment on these courses. During your course interview your tutor will advise exactly what is required.

WHAT CAN I DO NEXT?

You could progress to a degree-level study including a HNC/HND in Specialist Make-up or go into employment as a Freelance Make-up Artist, Brand Make-up Artist, Theatre and Film Artist, TV and Commercial Artist, Cosmetic Make-up Artist or Wig Specialist.

ENTRY REQUIREMENTS

- Level 2 Media Make-up, Beauty Therapy or Hairdressing
- Completion of a summer project
- Excellent communication skills and commitment to the course
- Flexibility to work on location in the evenings and on weekends
- Additional qualifications and experience will be considered on an individual basis





Future Careers...

IN HAIR AND BEAUTY

The hair and beauty sector is ideal for those who have a creative flair, enjoy helping people look and feel good about themselves and have a passion for keeping up with the latest trends.

TYPES OF ROLES AVAILABLE:

HAIR SALON MANAGER

Hair Salon Managers organise and coordinate resources of hair salons.

Average salary - £22,200*

Day-to-day tasks:

Recruit and organise staffing, order stock and promote products to customers, discuss client requests, suggest style ideas, cut, colour and style hair and keep up to date with new trends, techniques and hair products.**

Working environments:

Salons, health spas, on a cruise ship or in a hotel setting.

BEAUTY THERAPIST

Beauty Therapists provide face and body treatments to clients.

Average salary - £20,500*

Day-to-day tasks:

Give clients facials, apply and advise on make-up, shape eyebrows, give manicures, pedicures and nail treatments, hair removal and tanning.**

Working environments:

Salons, health spas, on a cruise ship or in a hotel setting.

In-demand skills that commonly appear in job descriptions for roles within the hair and beauty sector include*:

- Customer Services
- Sales
- Communication
- Enthusiasm
- Detail oriented

*Information from EMSI 2022

**Information from nationalcareers.service.gov.uk

Health and Social Care

IF YOU'RE LOOKING FOR A CAREER THAT IS CHALLENGING BUT REWARDING, NORTH NOTTS COLLEGE CAN HELP YOU TAKE YOUR FIRST STEPS TOWARDS A CAREER IN THE CARING PROFESSIONS.

Our Health and Social Care courses and apprenticeships will teach you the skills you'll need to work in a variety of roles. They function as the first step towards a career in the NHS as a Nurse, Midwife or Paramedic, or a role as a Health Assistant or Carer. Our courses and apprenticeships combine a work placement in a local setting with theoretical knowledge in areas such as anatomy and physiology, human development, report writing, communication, equality and diversity, psychology, sociology, research skills, reflective practice and safeguarding.

Our tutors pass on their knowledge gained from working in the Health and Social Care industry. Sharing their knowledge and experiences ensures that you hit the ground running in your career.

We work closely with a range of partners to ensure that you receive high-quality placements that give you the chance to gain insight into working in the sector. We work with Doncaster and Bassetlaw NHS Trust, Sure Start, NHS England, East Midlands Ambulance Service, Notts Mental Health Trust, Bassetlaw Health Partnerships and a range of local residential and nursing homes and other settings.

Whether you're progressing to further study, an apprenticeship or Higher Education after completing your course, we'll ensure you're as prepared as you can be.

PATHWAYS	
Level 1	Vocational Studies
Level 2	Health and Social Care Healthcare Support Worker Apprenticeship
Level 3	Health and Social Care Health and Social Care Apprenticeship
Level 4/5	Foundation Degree in Professional Practice in Health and Social Care
Level 5	Health and Social Care Higher- Degree Apprenticeship



Health and Social Care

LEVEL 1

VOCATIONAL STUDIES (HEALTH, FITNESS & BUSINESS)

This course will provide you with knowledge and understanding of four sectors; Health, Business, Sports and Public Services. If you are unsure about what route is best for you, this course offers you the chance to develop your knowledge across all of the above sectors and prepares you for progression to Level 2 in a variety of subjects leading to employment or higher study.

Core and transferable skills will be developed in; Communication, working with others, Problem solving, Managing information, Self-management and development. Practical projects will enable you to demonstrate your knowledge and understanding in a fun, enjoyable and creative style.

WHAT WILL I STUDY?

- Customer Service and Communication
- Fitness Testing
- Teamwork
- Healthy Lifestyles
- Problem Solving

WHAT CAN I DO NEXT?

You could progress to our Level 2 courses in Sport and Public Services, Level 2 Health and Social Care or Level 2 Business. Future careers include work in sectors such as the Armed Forces, Health Service, as well as the Sports or Business Industries.

ENTRY REQUIREMENTS

- GCSE grade 2 in English and maths

LEVEL 2

HEALTH AND SOCIAL CARE

Begin your career within the Health and Social Care sector and develop the skills and knowledge needed to set yourself apart. Whilst you're studying with us you'll undertake a work placement to work alongside and observe experienced practitioners. On the course you'll also gain valuable skills and confidence to work in the health and social care sector.

WHAT WILL I STUDY?

- Effective Communication and Professionalism within a Care Setting
- Equality and Diversity and Understanding Individual Needs
- Human Development
- Work Placement
- Infection Prevention and Control

WHAT CAN I DO NEXT?

You could progress to our Level 3 health and Social Care courses and apprenticeships or go into employment as a Health Care Assistant, Community Support Worker, Family Support Worker, Nurse or Midwife.

ENTRY REQUIREMENTS

- Four GCSEs at grade 3 or above including English and maths
- A clear DBS check

ENGLISH AND MATHS

If you haven't achieved GCSE English and maths at grades 4 or above you will undertake these qualifications alongside your main programme.

LEVEL 2 WC RP

HEALTHCARE SUPPORT WORKER APPRENTICESHIP

This apprenticeship is designed to help prepare you for a job as a Healthcare Support Worker and will provide you with a nationally recognised qualification. Throughout your apprenticeship you will learn how to work as part of a team to provide high quality and compassionate care to individuals.

WHAT WILL I STUDY?

- Health Intervention
- Person Centred Care and Support
- Dementia, Cognitive Issues, Mental Health
- Basic Life Support
- Physiological Measurements
- Personal and People Development
- Health, Safety and Security
- Duty of Care

WHAT CAN I DO NEXT?

You could progress to a Level 3 apprenticeship or course in Health and Social Care or into employment as a Health Care Support Worker, Health Care Assistant, Community Support Worker or Family Support Worker.

ENTRY REQUIREMENTS

- Level 1 English and maths



Health and Social Care

LEVEL 3 WC

HEALTH AND SOCIAL CARE

This course will enable you to develop relationships with a range of service users and be able to plan for their individual care needs. You will learn how to complete a care plan and identify basic care needs as well as the equipment needed to support that person to maintain their independence.



WHAT WILL I STUDY?

- Anatomy and Physiology
- Human Development
- Communication
- Equality and Diversity
- Psychology
- Sociology
- Reflective Practice
- Safeguarding

WHAT CAN I DO NEXT?

You could progress to degree-level study, including our Foundation Degree in Professional Practice in Health and Social Care, higher degree apprenticeships in Health and Social Care or into employment in areas such as physiotherapy, criminal psychology, community, family or social support work, radiography, nursing or teaching.

ENTRY REQUIREMENTS

- Five GCSEs at grade 4 or above including English and maths

OR:

- Level 2 Health and Social Care qualification
- A clear DBS check

LEVEL 3

HEALTH AND SOCIAL CARE APPRENTICESHIP

Our apprenticeships in Health and Social Care will provide you with a nationally recognised qualification whilst gaining experience working with an organisation in the sector.

We offer Level 3 apprenticeships in:

- Senior Healthcare Support Worker
- Lead Adult Care Worker

WHAT WILL I STUDY?

- Safeguarding
- Health and Wellbeing
- Professional Working and Development
- Behaviours including the 6Cs: Care, Compassion, Courage, Communication, Competence and Compassion
- Duty of Care in Care Settings

WHAT CAN I DO NEXT?

You could progress to Higher and Degree level study, including degree apprenticeships within the Care industry or go into employment as a Senior Healthcare Support Worker or Lead Adult Carer, depending on what apprenticeship you choose.

ENTRY REQUIREMENTS

- Entry requirements vary depending on apprenticeship
See nnc.ac.uk/course-type/apprenticeships for more information



ENGLISH AND MATHS

If you haven't achieved GCSE English and maths at grades 4 or above you will undertake these qualifications alongside your main programme.



Future Careers...

HEALTH AND SOCIAL CARE

The health and social care sector is ideal for those who have a passion for caring for others and includes jobs in personal care and healthcare.

TYPES OF ROLES AVAILABLE:

MIDWIFE

Midwives support pregnant women and their babies before, during and after, childbirth.

Average salary - £32,100*

Day-to-day tasks:

Giving pregnant women advice on staying healthy, run classes on pregnancy and parenting, check the health of mother and baby during pregnancy, monitor the mother and baby during labour, deliver the baby and visit people's homes to check on mother and baby.**

Working environments:

You could work at a client's home, at a health centre or a hospital.

SOCIAL WORKER

Social workers help to protect vulnerable children and adults from harm or abuse and support people to live independently.

Average salary - £35,500*

Day-to-day tasks:

Put together support plans for clients, keep records and write reports, discuss your cases with your supervisors, support clients safety and take the right action to protect them, work closely with communities, health professionals and other agencies, help clients to develop and maintain independent living skills and hold meeting and assessments with individuals and families to review their situation.**

Working environments:

You could work in an office, NHS or private hospital, an adult care home or children's care home.

In-demand skills that commonly appear in job descriptions for roles within the health and social care sector include*:

- Communication
- Management
- Enthusiasm
- Compassion
- Leadership

*Information from EMSI 2022

**Information from nationalcareers.service.gov.uk

Hospitality

FOOD FOR THOUGHT? OUR APPRENTICESHIPS IN HOSPITALITY ALLOW YOU TO TURN YOUR PASSION FOR FOOD, DRINK, ENTERTAINMENT AND CATERING INTO YOUR IDEAL CAREER.



Through our Hospitality apprenticeships at North Notts College, you will learn your trade out in industry, as you work in places such as bars, restaurants, cafes, conference centres, hotels or in catering. You will also develop your understanding of the hospitality industry with the help of our experienced assessors and training staff, who will aid your development through visits to your place of work, online teaching and constant support.

On your apprenticeship, you will choose an area of Hospitality to specialise in, where, depending on the level of your apprenticeship, you can choose between; Bar Service, Mixology, Food and Beverage Service, Food Production, Front Office, Event Supervisor, Bar and Supervisor.

PATHWAYS - HOSPITALITY

Level 2	Hospitality Apprenticeship
Level 3	Hospitality Apprenticeship



Hospitality

LEVEL 2

HOSPITALITY APPRENTICESHIP

This apprenticeship gives you the opportunity to gain the skills, knowledge and behaviours within the industry, required for someone relatively new to the hospitality industry. The programme is delivered in the workplace and supported by a tutor and your employer. Upon completion, you will attain a nationally recognised qualification.

WHAT WILL I STUDY?

- Industry knowledge
- The Business and it's competition
- Customer Service
- Employee and Employer Relationships

You will also choose a specialist route to tailor the programme to your individual job role:

- Bar Service
- Mixology
- Food and Beverage Service
- Food Production

ENGLISH AND MATHS

If you haven't achieved GCSE English and maths at grades 4 or above you will undertake these qualifications alongside your main programme.

WHAT CAN I DO NEXT?

You can progress to a Level 3 Hospitality apprenticeship or into employment in places such as bars, restaurants, cafes, conference centres or hotels.

ENTRY REQUIREMENTS

- GCSE English and maths at grade 2 or above or Functional Skills Level 1
- Successful interview and initial diagnostic tests



LEVEL 3 **HOSPITALITY
APPRENTICESHIP**

This apprenticeship programme gives supervisors in the hospitality industry the opportunity to gain the skills, knowledge and behaviours needed to effectively supervise a hospitality operation. The programme is delivered in the workplace and supported by a tutor and your employer. Upon completion, you will attain a nationally recognised qualification.

WHAT WILL I STUDY?

- Industry Knowledge
- The Business and it's Competition
- Customer Service
- Employee and Employer Relationships
- Leadership

You will also choose a specialist route to tailor the programme to your individual job role:

- Food and Beverage
- Front Office
- Events Supervisor
- Bar Supervisor

WHAT CAN I DO NEXT?

You could progress to a Level 4 or higher degree apprenticeship or into employment in a supervisor or management role within the Hospitality industry.

ENTRY REQUIREMENTS

- GCSE English and maths at grade 2 or above or Functional Skills Level 1
- Successful course interview and initial diagnostic tests



A uniform will need to be purchased for both the kitchen and front of house before starting a Catering and Hospitality course. A list of uniform requirements will be issued following successful enrolment to this course.



Future Careers...

HOSPITALITY

The catering and hospitality sector is ideal if you want to work in a fast-paced environment, have a passion for cooking and working in a customer-focused setting.

TYPES OF ROLES AVAILABLE:

BUTCHER

Butchers prepare and sell meat and poultry and make meat products.

Average salary - £21,500*

Day-to-day tasks:

Buy, order, store and control stock, receive deliveries and check their content and quality, create product displays, cut and trim meat, serve customers, advise customers how to prepare and cook meat and drive to markets, wholesalers and customer's premises.**

Working environments:

You could work in a factory or at a store.

RESTAURANT MANAGER

Restaurant Managers organise the day-to-day running of their venue and make sure customers are happy with the food and service they receive.

Average salary - £22,600*

Day-to-day tasks:

Organise shifts for staff, manage stock and budgets, follow licensing and health and safety rules and deal with customer complaints.**

Working environments:

Restaurants or hotel chains or catering for large events.

In-demand skills that commonly appear in job descriptions for roles within the hospitality sector include*:

- Customer Service
- Communication
- Management
- Enthusiasm
- Sales

*Information from EMSI 2022

**Information from nationalcareers.service.gov.uk

Public Services

DEVELOP THE KNOWLEDGE AND UNDERSTANDING NEEDED TO PROTECT AND SERVE WITH OUR PUBLIC SERVICES COURSES AT NORTH NOTTS COLLEGE.

PUBLIC SERVICES

Our Public Services courses focus on health and fitness, helping to prepare you for selection tests for the Armed Forces, Police or Fire and Rescue Services.

You'll learn from tutors who have walked the walk, having served in the military and played sport to elite and professional levels. You will develop the vital skills and discipline needed for a successful career in a frontline role, including teamwork, communication, initiative and leadership. You'll have the chance to develop practical skills such as navigation and orienteering as well as gaining knowledge of the criminal justice system, citizenship and human behaviour.

Within our practical based courses you'll have the chance to get involved in adventurous activities and pursuits including abseiling and mountain biking and take part in educational visits. You'll also be encouraged to take part in competitions and showcase your skills and abilities to build your confidence.

Alongside your studies you'll hear from serving Police Officers, members of the military and Firefighters, giving you an insight into what your future career might look like.

PATHWAYS - PUBLIC SERVICES

Level 1	Vocational Studies (Health, Fitness and Business)
Level 2	Sport and Protective Services
Level 3	Uniformed Public Services



Public Services

LEVEL 1

VOCATIONAL STUDIES (HEALTH, FITNESS & BUSINESS)

This course will provide you with knowledge and understanding of four sectors; Health, Business, Sports and Public Services. If you are unsure about what route is best for you, this course offers you the chance to develop your knowledge across all of the above sectors and prepares you for progression to Level 2 in a variety of subjects leading to employment or higher study.

Core and transferable skills will be developed in; Communication, working with others, Problem solving, Managing information, Self-management and development. Practical projects will enable you to demonstrate your knowledge and understanding in a fun, enjoyable and creative style.

WHAT WILL I STUDY?

- Customer Service and Communication
- Fitness Testing
- Teamwork
- Healthy Lifestyles
- Problem Solving

WHAT CAN I DO NEXT?

You could progress to our Level 2 courses in Sport and Public Services, Level 2 Health and Social Care or Level 2 Business. Future careers include work in sectors such as the Armed Forces, Health Service, as well as the Sports or Business Industries.

ENTRY REQUIREMENTS

- GCSE grade 2 in English and maths

LEVEL 2

SPORT AND PROTECTIVE SERVICES

This course is designed to equip you with the knowledge, understanding and skills required for success when moving towards a career in the uniformed and non-uniformed services or sports professions. Through studying a range of different topics you will learn how the different public services and sport professions work individually and how they interact with each other.

WHAT WILL I STUDY?

- Expedition Skills
- Land Navigation
- Sport and Recreation
- Health and Fitness
- Public Skills
- Participate in Outdoor Adventurous Activities

WHAT CAN I DO NEXT?

You could progress to our Level 3 Sport and Level 3 Public Services courses. Future careers include work in the Police Service, Fire Service, Ambulance and Rescue Services, Armed Forces and Sports industry.

ENTRY REQUIREMENTS

- Three GCSEs including English and maths at grade 3 or above

OR:

- Level 1 Sport and Public Services

LEVEL 3 **UNIFORMED PROTECTIVE SERVICES**

The course provides students with the opportunity to develop skills and behaviours that will give them a strong opportunity for success at entry/application stages of the public services.

The course offers a range of subjects directly relating to employment opportunities within the Public Services.

WHAT WILL I STUDY?

- Public Service Skills
- Employment in the Uniformed Services
- Health & Fitness for Entry into the Public Services
- Sport & Recreation
- Teamwork and Leadership
- Attending Emergency Incidents

WHAT CAN I DO NEXT?

You could go directly into employment in the Protective Services or other sectors, or continue studying in Higher Education.

ENTRY REQUIREMENTS

- Three GCSEs including English and maths at grade 3 or above

OR:

- Level 2 Sport and Public Services

**ENGLISH AND MATHS**

If you haven't achieved GCSE English and maths at grades 4 or above you will undertake these qualifications alongside your main programme.



Future Careers...

IN PUBLIC SERVICES

The public service sector is ideal for those who want to work in a fast-paced environment, have an interest working frontline supporting the public and have a passion for fitness.

PRISON OFFICER

Prison Officers supervise inmates in prisons, remand centres and young offenders institutions.

Average salary - £30,900*

Day-to-day tasks:

Keep inmates secure, carry out security checks and searches, supervise prisoners and maintain order, support vulnerable prisoners, go with prisoners on external visits like court appearances or hospital appointments, prepare inmates for release through rehabilitation programmes, update records and write reports on prisoners.**

Working environments:

A prison or correctional facility.

POLICE COMMUNITY SUPPORT OFFICER

Police Community Support Officers work in a neighbourhood policing team to help deal with and prevent crime.

Average salary - £27,100*

Day-to-day tasks:

Go on patrols, offer advice on crime prevention, deal with anti-social behaviour, deliver talks in schools, issue fixed penalty notices, use social media channels to develop links with local communities and provide support at large public events.**

Working environments:

You could work in the community or on a patrol.

In-demand skills that commonly appear in job descriptions for roles within the public service sector include*:

- Communication
- Customer Service
- Management
- Detailed Oriented
- Leadership

*Information from EMSI 2022

**Information from nationalcareers.service.gov.uk

Sport

TURN YOUR PASSION INTO A CAREER WITH OUR COURSES IN SPORT.

SPORT

Our experienced tutors, who have played and coached in sports at a regional, national and international level, will push you, teach you how to motivate others and help you build a career in the sport and leisure industry.

Our range of Sport courses will teach you a wide-variety of skills including gym instructing, personal training, fitness testing, coaching, sports massage and the importance of nutrition and diet. You'll gain leadership, communication and teamwork skills that are important for a career in the fitness industry.

You will learn core elements of sport in our sporting facilities, including gym and sports halls, as well as out in industry as You'll link up with with local sporting organisations where you'll have the opportunity to undertake placements and work experience with a variety of employers. This will help you gain an understanding of what it's like to work in the fitness industry and learn from those doing the job you want. You'll also have the chance to gain additional qualifications as part of your course in subjects including Anti-Doping, Personal Training and more.

On our Sport courses you will also have the opportunity to visit leading sporting organisations across the UK, where previous students have visited places such as the Etihad Stadium, the English Institute Of Sport and St. George's Park, home of England Football.

Progression from our Sport courses can take you into employment in the sport and leisure industry, or on to further study – we now offer the chance for you to ultimately gain a BSc (Hons) Degree in Sport Science at the Retford Post-16 Centre – or progress to study at another university.

PATHWAYS - SPORT

Level 1	Vocational Studies (Health, Fitness and Business)
Level 2	Sport and Protective Services
Level 3	Sport, Fitness and Personal Training Sport and Exercise Science
Level 4/5	Foundation Degree in Sport Science
Level 6	BSc (Hons) Degree in Sport Science



Sport

LEVEL 1

VOCATIONAL STUDIES (HEALTH, FITNESS & BUSINESS)

This course will provide you with knowledge and understanding of four sectors; Health, Business, Sports and Public Services. If you are unsure about what route is best for you, this course offers you the chance to develop your knowledge across all of the above sectors and prepares you for progression to Level 2 in a variety of subjects leading to employment or higher study.

Core and transferable skills will be developed in; Communication, working with others, Problem solving, Managing information, Self-management and development. Practical projects will enable you to demonstrate your knowledge and understanding in a fun, enjoyable and creative style.

WHAT WILL I STUDY?

- Customer Service and Communication
- Fitness Testing
- Teamwork
- Healthy Lifestyles
- Problem Solving

WHAT CAN I DO NEXT?

You could progress to our Level 2 courses in Sport and Public Services, Level 2 Health and Social Care or Level 2 Business. Future careers include work in sectors such as the Armed Forces, Health Service, as well as the Sports or Business Industries.

ENTRY REQUIREMENTS

- GCSE grade 2 in English and maths

LEVEL 2

SPORT AND PROTECTIVE SERVICES

This course is designed to equip you with the knowledge, understanding and skills required for success when moving towards a career in the uniformed and non-uniformed services or sports professions. Through studying a range of different topics you will learn how the different public services and sport professions work individually and how they interact with each other.

WHAT WILL I STUDY?

- Expedition Skills
- Land Navigation
- Sport and Recreation
- Health and Fitness
- Public Skills
- Participate in Outdoor Adventurous Activities

WHAT CAN I DO NEXT?

You could progress to our Level 3 Sport and Level 3 Public Services courses. Future careers include work in the Police Service, Fire Service, Ambulance and Rescue Services, Armed Forces and Sports industry.

ENTRY REQUIREMENTS

- Three GCSEs including English and maths at grade 3 or above

OR:

- Level 1 Sport and Public Services



LEVEL 3 RP

SPORT, FITNESS AND PERSONAL TRAINING

This course is designed for students who wish to progress into employment or further study in the sport sector. You will gain specialist knowledge in sport, nutrition, anatomy and physiology as well as practical skills in leadership, event management and planning an exercise programme.

WHAT WILL I STUDY?

- Functional Sport Massage
- Fitness Testing
- Personal Trainer Skills Development
- Nutrition
- Sports Injuries
- Fitness Training

WHAT CAN I DO NEXT?

You could progress to our Foundation Degree in Sport Science, BSc (Hons) in Sport Science or go into employment as a Gym Instructor, Personal Trainer, Sports Coach, Sport Nutritionist, Sports Therapist or Sports Development Assistant.

ENTRY REQUIREMENTS

- Five GCSEs including English and maths at grade 4 or above

OR:

- Level 2 Sport or Public Services

ENGLISH AND MATHS

If you haven't achieved GCSE English and maths at grades 4 or above you will undertake these qualifications alongside your main programme.

LEVEL 3 RP

SPORT AND EXERCISE SCIENCE

This course will prepare and support your progression to higher education, and employment in the sport and exercise science sector. You will gain the knowledge, understanding and skills that underpin study of the sport and exercise science sector.

WHAT WILL I STUDY?

- Sports and Exercise Physiology
- Applied Sport and Exercise Psychology
- Nutrition for Sport and Exercise Performance
- Field and Laboratory-based Fitness Testing
- Coaching for Performance and Fitness
- Biomechanics
- Specialised Fitness Training
- Sports Injury and Assessment

WHAT CAN I DO NEXT?

You could progress to degree-level study on our Foundation Degree in Sport Science, BSc (Hons) in Sport Science or into employment as a Sport Therapist, Sports Coach, Sports Physiotherapist, Personal Trainer, Sports Nutritionist or Sports Psychologist.

ENTRY REQUIREMENTS

- Level 2 Sport or Public Services

OR:

- Five GCSEs at grade 4 or above including English and maths



Future Careers...

IN SPORT

The sports sector is ideal for those who have a passion for fitness and wish to share that drive with others.

SPORTS DEVELOPMENT OFFICER

Sports Development Officers organise projects and training to encourage people to take part in sport and have a healthier lifestyle.

Average salary - £24,000**

Day-to-day tasks:

Find and train staff, coaches and volunteers for projects, promote and run projects and activities, monitor and evaluate projects, find funding, manage resources and budgets, put local and national policies into practice, attend meetings, seminars and conferences and coach or supervise sports activities.**

Working environments:

You could work in an office, at a school, on a sports field, at a fitness centre or at a college.

OUTDOOR ACTIVITIES INSTRUCTOR

Outdoor Activities Instructors lead trips and teach skills in activities like hill walking, climbing, canoeing, skiing and snowboarding.

Average salary - £23,000**

Day-to-day tasks:

Plan and prepare activities, explain, advise on and demonstrate activities, instruct in specialist areas like sailing or climbing, make sure all equipment and facilities are safe and explain safety procedures.**

Working environments:

At an activities centre or in the countryside.

In-demand skills that commonly appear in job descriptions for roles within the sport sector include*:

- Communication
- Customer Service
- Enthusiasm
- Management
- Leadership

*Information from EMSI 2022

**Information from nationalcareers.service.gov.uk

Careers Index

If you have a dream job or career in mind, you can find progression routes to the below professions on their corresponding page numbers.

BUSINESS PAGE 30

- Business Administrator
- Department Manager
- Event Manager
- Finance Officer
- Hotel Manager
- Human Resource Officer
- Management Consultant
- Marketing Manager
- Project Manager

COMPUTING AND DIGITAL PAGE 38

- App Developer
- Data Analyst
- Database Administrator
- Digital Marketer
- IT Consultant
- IT Technician
- Software Developer
- Software Engineer
- User Experience Developer
- Website Designer

CONSTRUCTION PAGE 44

- Bricklayer
- Carpenter
- Construction Manager
- Domestic Heating Technician
- Electrician
- Joiner
- Kitchen Fitter
- Labourer
- Plumber
- Shop Fitter

EDUCATION AND CHILDCARE SERVICES PAGE 58

- Childminder
- Early Years Practitioner
- Early Years Teacher
- Family Support Worker
- Nanny
- Nursery Supervisor
- Nursery Manager
- Playworker
- Residential Care Assistant
- Teaching Assistant

ENGINEERING AND MOTOR VEHICLE PAGE 68

- Electrical Engineer
- Fabricator
- Machinist
- Maintenance Technician
- Motor Trade Sales Assistant
- Motor Vehicle Fitter
- Mechanical Engineer
- Technical Support
- Vehicle Technician
- Welder

HAIR AND BEAUTY PAGE 88

- Barber
- Beauty Therapist
- Colour Technician
- Cosmetic Retail Assistant
- Hairdresser
- Hair Extension Specialist
- Make-up Artist
- Massage Therapist
- Nail Technician
- Salon Manager

HEALTH AND SOCIAL CARE PAGE 100

- Care Worker
- Health Care Assistant
- Health Visitor
- Midwife
- Nurse
- Paramedic
- Physiotherapy Assistant
- Radiographer
- Social Worker
- Support Worker

PUBLIC SERVICES PAGE 114

- Army Officer
- Border Force Officer
- Coastguard
- Firefighter
- Mountain Rescue
- Police Officer
- Prison Officer
- Ranger
- Royal Navy Officer
- Youth Leader

SPORT PAGE 120

- Gym Instructor
- Leisure Manager
- Outdoor Activity Instructor
- Personal Trainer
- Sports Coach
- Sports Development Assistant
- Sports Nutritionist
- Sports Therapist

Our Facilities

AT NORTH NOTTS COLLEGE LEARNING IS ABOUT SO MUCH MORE THAN THE CLASSROOM - IT'S AN EXPERIENCE.



The Fitness Suite

INDUSTRY-TAILORED LEARNING SPACES

We have fantastic facilities designed to reflect real working environments and standards, fitted with the latest equipment and resources, such as our Motor Vehicle Workshop with hybrid and electric cars, so our students can develop the sought-after skills needed in today's workplace.



In our INsync Salon, Hair and Beauty students develop their skills on paying customers. Find out more and book a treatment through the QR-code.

OUTSTANDING LIBRARY

As a student at North Notts College, the library is the ideal place for you to enrich your college experience. Here, you can expand your knowledge or learn a new skill with our helpful resources, or find a quiet spot to study in our comfy study spaces.

STATE-OF-THE-ART FITNESS SUITE

As a student, you have access to a wide variety of different enrichment activities and programmes, including our state-of-the-art student gym. The gym is packed to the brim with all the gear, machines and equipment you'll need to reach your fitness goals, and best of all, it's completely free!

FOOD AND DRINK

We have a wide variety of fresh food and drink available daily at both our Worksop campus and the Retford Post-16 centre. Whether you're looking for some delicious brain food or just in the mood for a scrumptious snack, our on-site bistro and cafe has got you covered with a wide selection of choices available.



INsync Hair and Beauty Salons



Motor Vehicle Workshop

Rotherham College

YOUR CAMPUS

Based in the heart of Rotherham's town centre, we specialise in providing career-focused training and education. We have industry-standard facilities and courses which are designed alongside local employers so that you can learn the most sought after skills required within your chosen industry and start your career a step ahead.

We serve a variety of local communities and provide an easy-to-use student bus service. Studying in the centre of town also gives the opportunity to have fun with your new peers, through exploring local cafes, shops and social spaces.

STUDY WITH US

Our courses include a variety of levels to suit all abilities - from entry level to degree-level - as well as a range of apprenticeships.

You can choose from a wide range of subjects including:

- Art, Graphic Design and Fashion
- Business, Retail and Tourism
- Catering and Hospitality
- Computing and Digital
- Construction (Bricklaying, Carpentry and Joinery, Plumbing and Electrical)
- Education and Childcare Services
- Engineering
- English and Maths
- English for Speakers of Other Languages (ESOL)
- FLEX - Dedicated department for students with Special Educational Needs
- Games Animation
- Hair and Beauty
- Health and Social Care
- Media Make-up
- Media and Photography
- Music
- Performing Arts



APPRENTICESHIPS

Many of these courses are offered as apprenticeships, which you can find at rotherham.ac.uk/course-type/apprenticeships. Apprenticeships are a great way to earn while you learn, as well as being a fantastic opportunity if you are more of a hands-on learner. Whether you stay within the company after your apprenticeship, or move on to somewhere new, it is an easy way to get your foot in the door in a well-paid career. More information is provided on page (16-17).

YOUR FACILITIES

Our courses are delivered within industry-standard facilities, which allows students to develop practical experience preparing them to thrive in their chosen career. Learning within these environments will ensure you are workplace ready and allow you to:

- Build confidence and perfect your performance within our in-house theatre
- Prepare for a culinary career in our commercial training restaurant, The Wharnccliffe
- Hone your hairdressing, beauty therapy and nails skills in our commercial on-site training salon, Inspire
- Build foundations for a successful career in bricklaying, joinery, plumbing or electrical installation, some of which are housed in our dedicated construction centre

For more information about Rotherham College, please visit rotherham.ac.uk

As well as excellent courses and learning facilities, we offer plenty of spaces for you to relax and socialise with friends. There are two on-site cafes serving a wide range of food and drinks (including Starbucks), and a theatre where you can watch our music and performing arts students put on shows and perfect their craft. The town centre also has a local market and plenty of independent shops and cafes to explore.

HELPING YOU SUCCEED

All courses are delivered by specialist tutors, many of which have worked or still work in the industry they teach. They bring invaluable expert knowledge and a breadth of experience to their teaching, and a passion for the development and achievements of their students.

We work extensively with employers within key industries to ensure our courses meet local and regional skill needs. This not only means students are equipped with the skills employers are looking for when they finish college, but also offers them the opportunity for work experience and potential future employment.

As well as plenty of support to launch your dream career, we provide a direct pathway to Higher Education at University Centre Rotherham (UCR), also part of the RNN Group, for those interested in studying a degree close to home with familiar tutors. UCR is a dedicated university centre offering degree-level courses and professional training to the local community of Rotherham.

Dearne Valley College

YOUR CAMPUS

At Dearne Valley College, our purpose is to help you achieve your professional and personal goals.

All of the courses and apprenticeships we offer aim to provide students with the tools that they need in order to take their first step towards their dream career.

Located in Wath-upon-Deerne, less than 20 minutes from Rotherham Town Centre by bus, we specialise in providing our students with a career focused education. Our industry-specific courses are also designed with current and future career trends and technologies in mind, so that students can learn the most sought-after skills in their chosen industry and start their career one step ahead.

Students who study with us also have access to a range of industry-standard facilities. This includes our own onsite sports hall and gym facility, fully equipped with all the latest fitness technology. Students and staff are able to use these facilities, and have access to discounted memberships.

For more information about Dearne Valley College, please visit dearne-coll.ac.uk

STUDY WITH US

Our courses include a variety of levels to suit all abilities - from entry level to degree level - as well as a range of apprenticeships.

Choose from a wide range of subjects including:

- Animal Care
- Construction (Joinery, Plastering and Bricklaying)
- English and Maths
- Esports
- FLEX - Dedicated department for students with Special Educational Needs
- Hair and Beauty
- Health and Social Care
- Land-based Industries
- Motor Vehicle
- Public Services
- Sport

YOUR FACILITIES

We pride ourselves on investing in your future. All of our courses are delivered in industry-standard facilities with excellent equipment.

Our on-site Animal Care department houses many different species ranging from skinks to snakes, and meerkats to mice. We pride ourselves on our fantastic array of animals, being one of the only colleges in the UK to have our very own Armadillo.

At our Academy of Sport, you can really raise the bar by using facilities such as our on-site sports and fitness centre, multisport cages, Astroturf pitches and the nearby Manvers boathouse and lake. You can also fuel your future in our state-of-the-art motor vehicle workshop housing hybrid and electric vehicles. You can also craft key skills in our workshops dedicated to trowel occupations, carpentry and joinery and plastering.

Outdoors, you can cultivate your land-based skills in our fantastic facilities including our 12-acre forest, polytunnels and more.

Your time with us is about more than learning. We want you to enjoy your experience with us - whether this be through socialising with your new peers or being able to relax whilst you study, we have plenty of social spaces for you to do so.

HELPING YOU SUCCEED

Studying with us gives you industry specific skills for life that you can use within your future career. It gives you industry specific skills that you can use in your future career.

By working with our extensive network of local and regional employers, we make sure that our courses give you the skills for success that businesses are looking for. Our professional networks also offer the opportunity for work experience and potential future employment.

Our talented teams of specialist tutors have worked, or still work, in the industry they teach. They bring a wealth of expert knowledge, breadth of experience and passion to their teaching. Whatever your area of interest, we have the facilities, expert tutors and professional links to help you succeed.



Travelling to College

**WE ARE EASILY ACCESSIBLE
BY BUS, TRAIN AND CAR.**



TRAVELLING TO US...

BY BUS

Our Worksop and Retford campuses are close to many bus routes across North Nottinghamshire.

The Traveline journey planner can help you plan a route and get information about public transport services:

traveline.info

North Notts College offers a student bus service from Retford to Worksop to make it quicker and easier for you to access College. There is a small fee, however learners who are eligible for bursary are able to have this fee covered. Passes can be picked up from Student Services.

For more information visit:

**[nnc.ac.uk/information/student-support/
student-bus-service](http://nnc.ac.uk/information/student-support/student-bus-service)**

BY TRAIN

North Notts College, Worksop Campus, is located a short walk away from Worksop train station (WRK) and North Notts College, Retford Campus, is located a 15 minute walk away from Retford train station (RET).

If you travel a lot by train you could benefit from a railcard.

A 16-17 saver railcard gets you 50% off standard anytime, off peak, advance and season tickets. It is just £30 and is valid for one year or until your 18th birthday, whichever comes first. For more information visit **16-17saver.co.uk**

A 16-25 railcard can get you 1/3 off rail travel for everyone aged 16-25 for just £30 for one year or £70 for three years. For more information visit **16-25railcard.co.uk**

Mature students can also apply for a one year railcard, which can be extended with evidence of continuing to study every year.



BY CAR

We offer free car parking at both North Notts College's Worksop and Retford campuses for students and visitors.

POST 16 TRAVEL ASSISTANCE

Nottinghamshire residents under 19 can apply for a post-16 travel assistance pass including half-fare passes, season pass and travel allowance available.

Visit nottinghamshire.gov.uk/education/travel-to-schools/post-16-mainstream-travel-assistance for full details and eligibility criteria.

If you live in South Yorkshire, enquire travelsouthyorkshire.com/1618 about travelling into Bassetlaw District.

For more information on travelling to college visit: nnc.ac.uk/information/student-support/student-bus-service

Student Bus Service

HOP ON BOARD!

Our student only bus routes make it easier to get to college from a wide range of areas.

Each service will run first thing in the morning, getting you into College for your first lesson and will return at the end of the College day.

There is a small charge per day or multiple travel passes can be purchased for a discounted price.

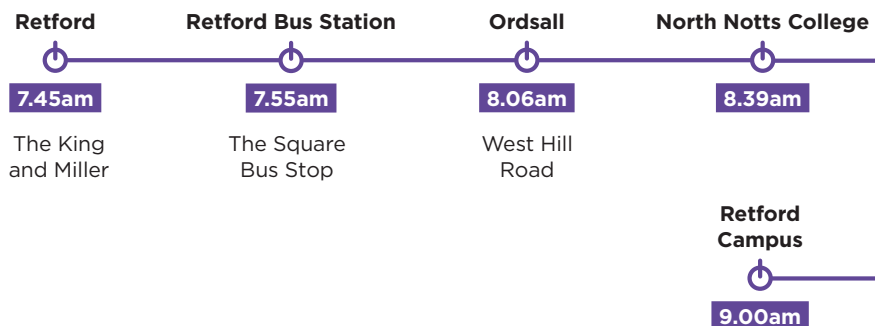
You may be eligible for funding to pay for your journey to and from College, more information on Financial Support can be found on page 25.

For more information on our Student Bus Service and details on how to book once you have enrolled, please visit:

nnc.ac.uk/information/student-support/student-bus-service

Please note our bus timetables are subject to change. Check our websites for the most up-to-date information.

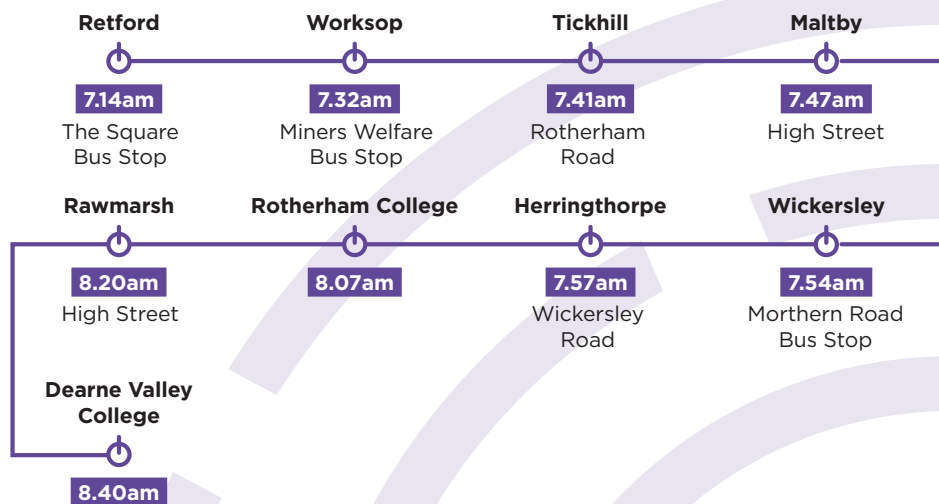
ROUTE 1 – RETFORD – NORTH NOTTS COLLEGE



BROADEN YOUR HORIZONS

If you are local to Worksop, Retford or the surrounding areas, we also have a student bus service that runs through Retford and Worksop which takes you to Rotherham College and Dearne Valley College (other colleges within our Group). This allows you to study courses across any of the three Colleges.

ROUTE 2 - RETFORD - ROTHERHAM COLLEGE - DEARNE VALLEY COLLEGE



FOR MORE INFORMATION PLEASE VISIT:

nnc.ac.uk/information/student-support/student-bus-service

rotherham.ac.uk/information/student-support/student-bus-service

dearne-coll.ac.uk/information/student-support/student-bus-service

HOW TO Find Us

NORTH NOTTS COLLEGE

WORKSOP CAMPUS

Carlton Road
Worksop
Nottinghamshire
S81 7HP

RETFORD CAMPUS

Old Hall Drive
Ordsall
Retford
DN22 7EA

DVC **Dearne Valley College**

RC **Rotherham College**

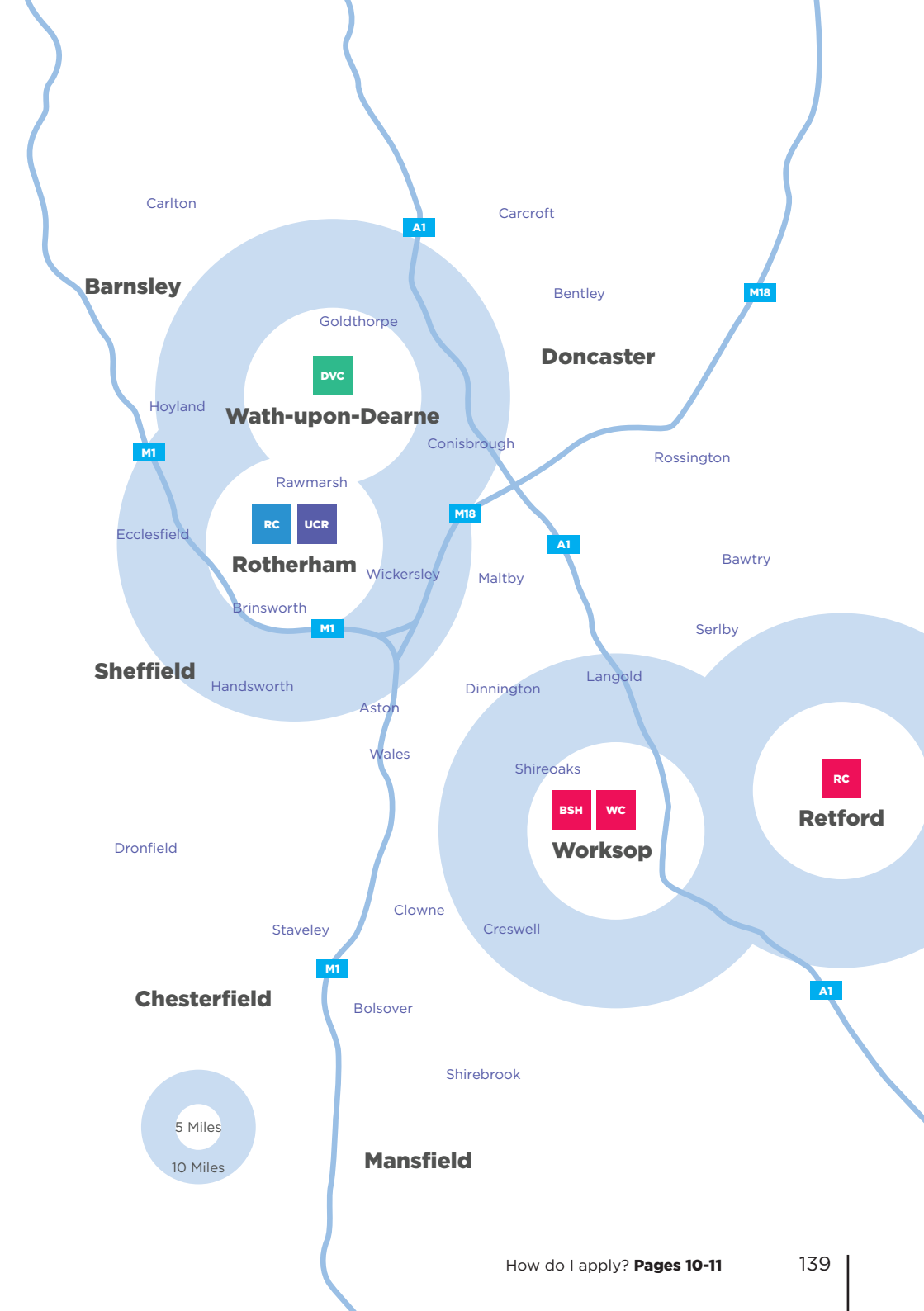
UCR **University Centre Rotherham**

BSH **North Notts College - Bridge Skills Hub campus**

WC **North Notts College - Worksop Campus**

RC **North Notts College - Retford Campus**

Note: Rotherham College and Dearne Valley College (part of our College Group) also offers a wide variety of courses and apprenticeships in the South Yorkshire region.



OPEN EVENTS

NORTH NOTTS COLLEGE - WORKSOP CAMPUS

Saturday 26th November 2022

10.00am - 12.00pm

Saturday 18th March 2023

10.00am - 12.00pm

Thursday 22nd June 2023

3.30pm - 6.30pm

.....

NORTH NOTTS COLLEGE - RETFORD CAMPUS

Thursday 24th November 2022

3.30pm - 6.30pm

Thursday 16th March 2023

3.30pm - 6.30pm

Thursday 29th June 2023

3.30pm - 6.30pm

.....



Scan here to
register for one of
our open events.



North Notts College
Rotherham College
Dearne Valley College

Part of

RNN GROUP

These courses may
be funded through



Education & Skills
Funding Agency