

Registers and templates are stored on the IG SharePoint portal

Various UK legislation

RNN Group procedure

Case reference (FOI, DSAR, DIS, ICO)  
Original case detail

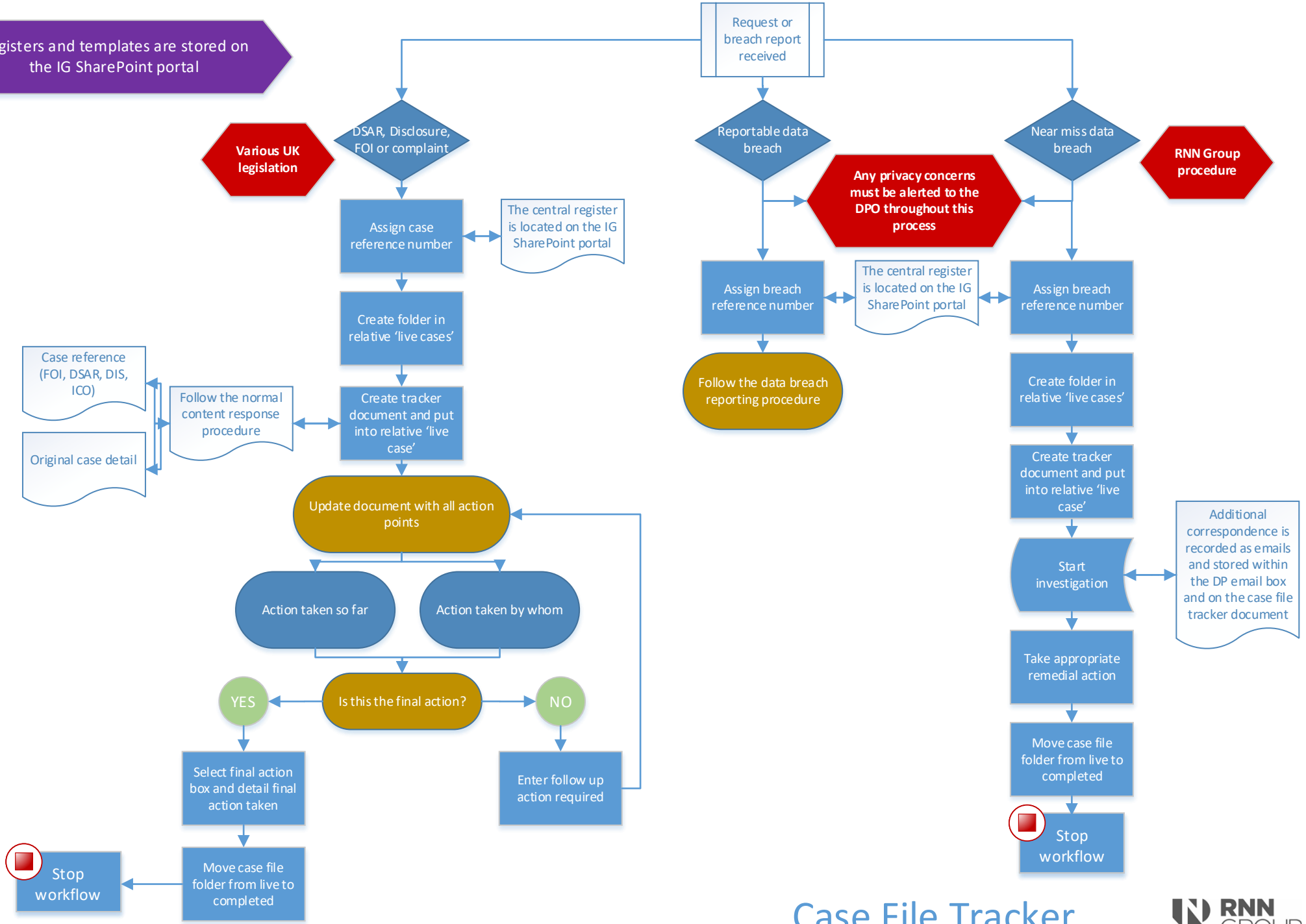
Follow the normal content response procedure

The central register is located on the IG SharePoint portal

Any privacy concerns must be alerted to the DPO throughout this process

The central register is located on the IG SharePoint portal

Additional correspondence is recorded as emails and stored within the DP email box and on the case file tracker document



# Case File Tracker

